



Sun Louvers Catalogue



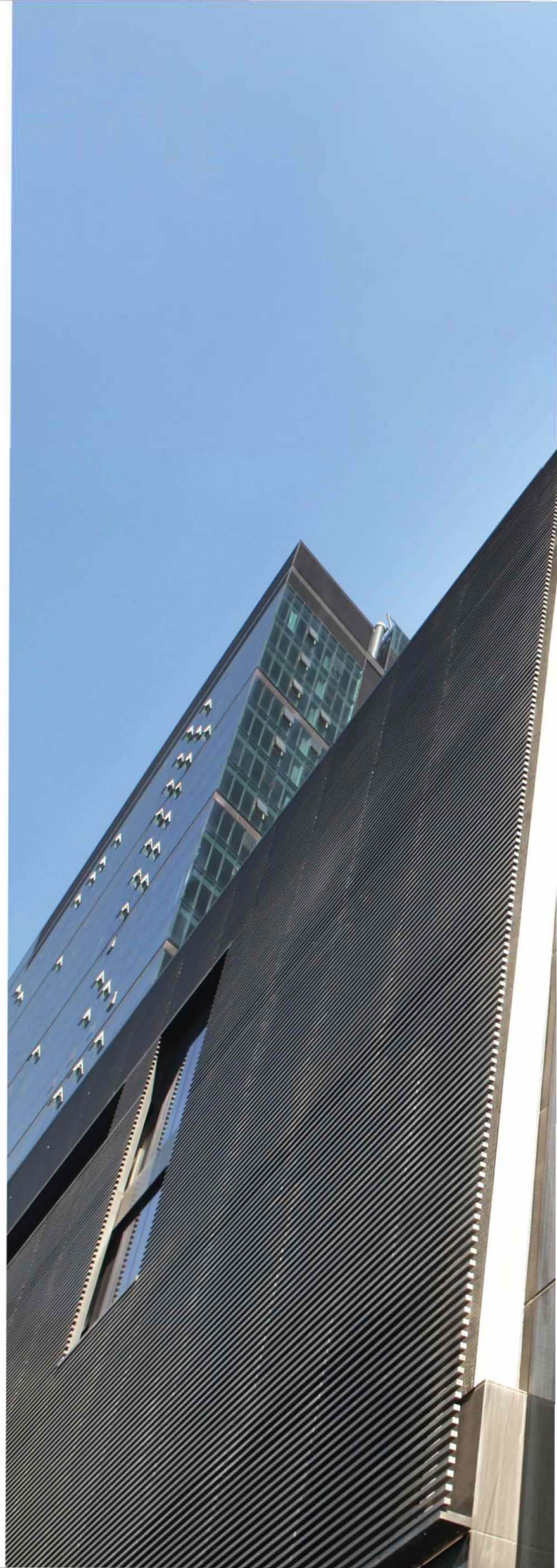
METAL SUN LOUVERS

Introduction

Sun louvers are made up of aluminum extrusion or aluminum panel. The surface of the panel can be anodized, PVDF spraying or powder coating. Various RAL and woodgrain colors are available for choice.

The purpose of the system is to keep ideal indoor light and temperature, absorb up to 80% of solar heat and help to reduce energy cost up to 30%, while allowing exterior views and free circulation of air. The sun louvers can save maximum energy and protect the environment.











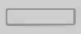
Metal sun louvers are simple, elegant, firmly fixed to the structure, various color available, durable metallic elements, it is widely applied to all kinds of constructions. Its combining decorative effect with the function, well showing the architects and designers' purpose.







INDEX

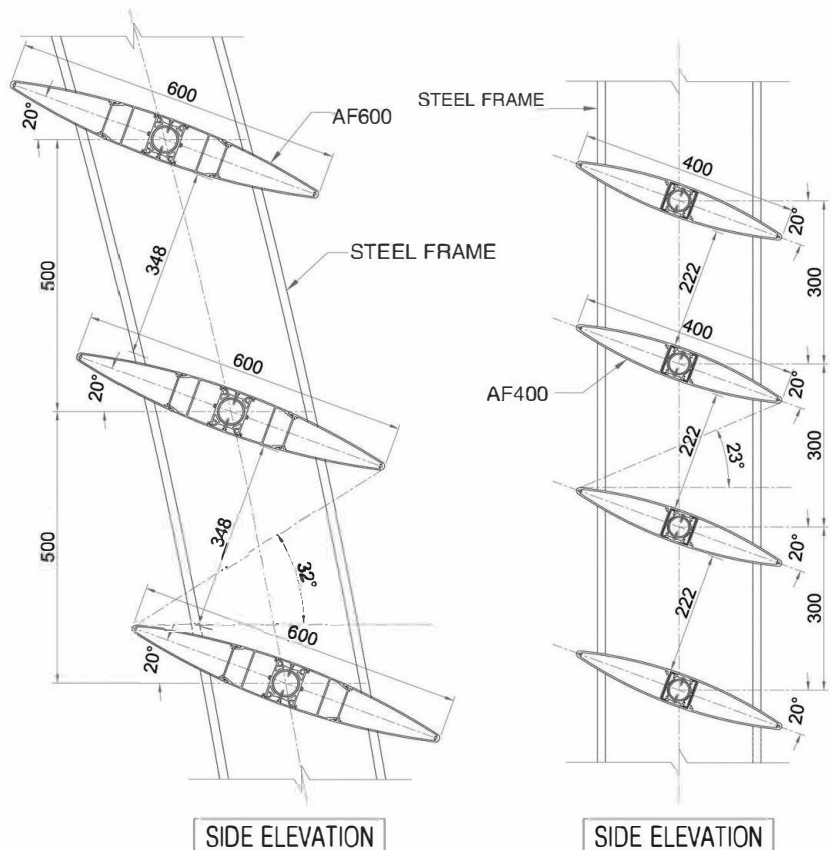
	DX-AF600/500/450/350-----1~6
AEROFOIL	
	DX-AF300/250/200-----7~10
AEROFOIL	
	DX-AF150/120/100/92/75----11~14
AEROFOIL	
	DX-AW375-----15~16
AEROWING	
	DX-AW450-----17~18
AEROWING	
	DX-AB115/150/200-----19~20
AEROBRISE	
	DX-CR160-----21~22
CELOSCREEN	
	DX-CZ132/95/70-----23~24
CELOSCREEN	
	DX-CS23/40-----25~26
CELOSCREEN	
	DX-AC85-----27~30
AEROSCREEN	
	DX-BL-----31~32
BOX LOUVERS	
PROJECT REFERENCE	-----33~34
TECHNICAL DATA	-----35~37
COLOR CHART	-----38

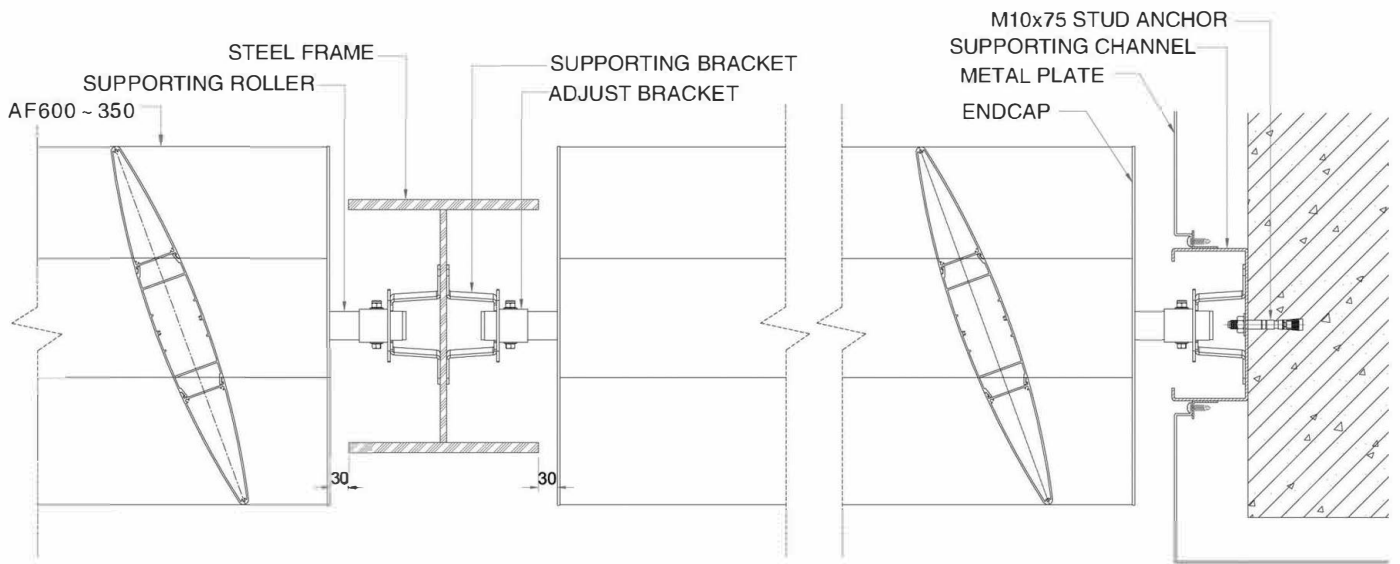


Description:

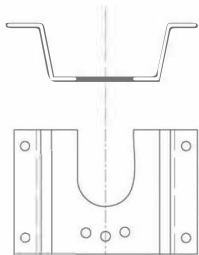
DEXONE AF series Aerofoil Sun Louvers panel are based on aluminum extrusion, mainly in elliptic shape,width vary from 75mm to 600mm,maximum length 6000mm.According to different decorative effect,load-carrying capability and sun control request,adopt different sun louvers panel and structure.

Colors and surface: The surface of the panel can be anodized,PVDF spraying or powder coating.various RAL colors and woodgrain colors are available for choice.

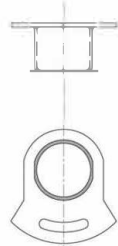




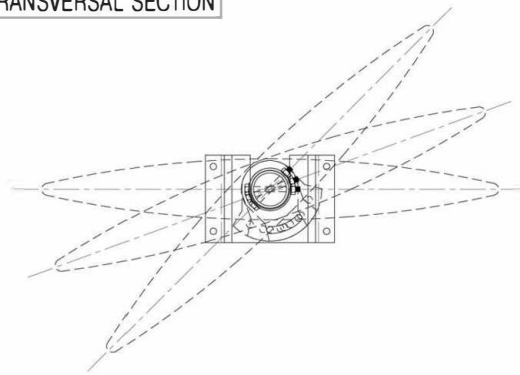
TRANSVERSAL SECTION



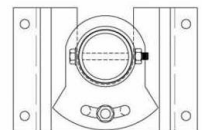
SUPPORTING BRACKET



ADJUSTMENT PARTS



DIAGRAMMATIC SKETCH OF ADJUSTING ANGLE



COMBINING DETAILS OF SUPPORTING BRACKET AND ADJUST PARTS

AEROFOIL DX-AF600/450/400/350

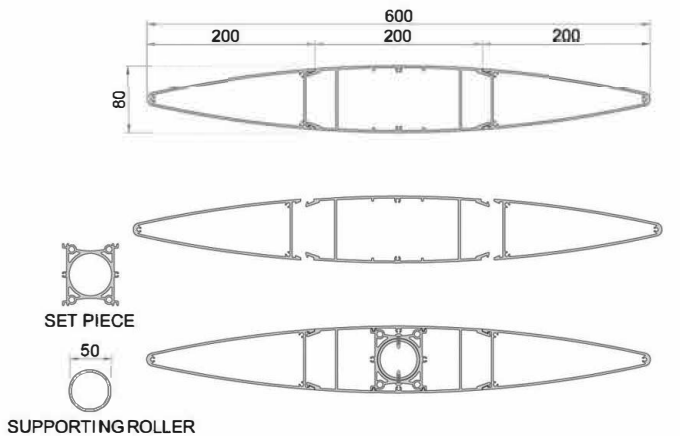


Composition:

AF350~600 series Aerofoil Sun Louvers are made up of aluminum extrusion. AF500~600 series consist of 2 or 3 parts aluminum extrusion, AF350~450 series are single aluminum extrusion. Maximum length is 5000mm. It is matched with corresponding endcap and supporting roller. There is installation hole and spacing hole in the sun louvers panel, which is installed with the endcap and supporting roller by using screw or aluminum extrusion accessories.

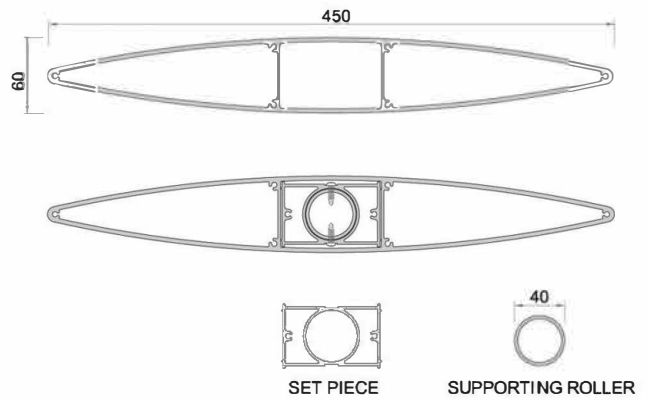
The material of the supporting bracket is stainless steel, G.I steel or aluminum. It is up to the construction and the design of the load carrying capability of the panel.

DX-AF600



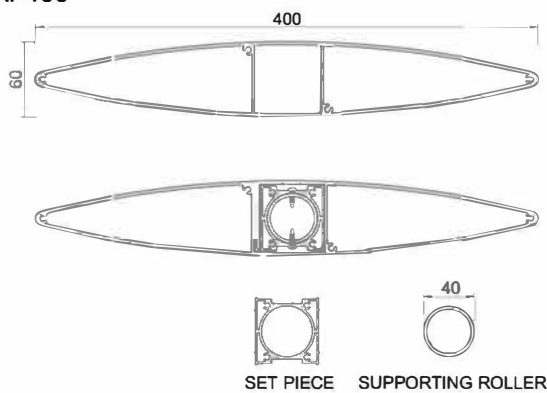
MATERIAL	THICKNESS	RECOMMENDED MAX. LENGTH		COLORS
		m	ft	
Aluminum	3.0	5.3	17.39	Various RAL and woodgrain colors available

DX-AF450



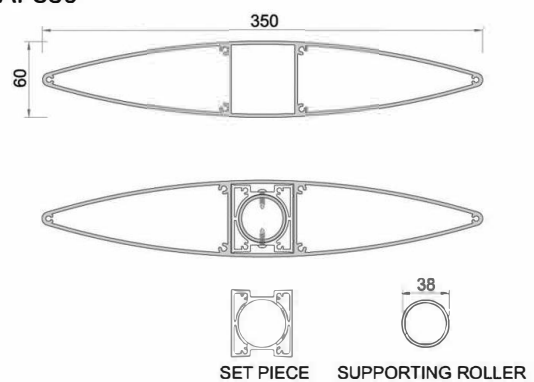
MATERIAL	THICKNESS	RECOMMENDED MAX. LENGTH		COLORS
		m	ft	
Aluminum	3.0	5.5	18.04	Various RAL and woodgrain colors available

DX-AF400

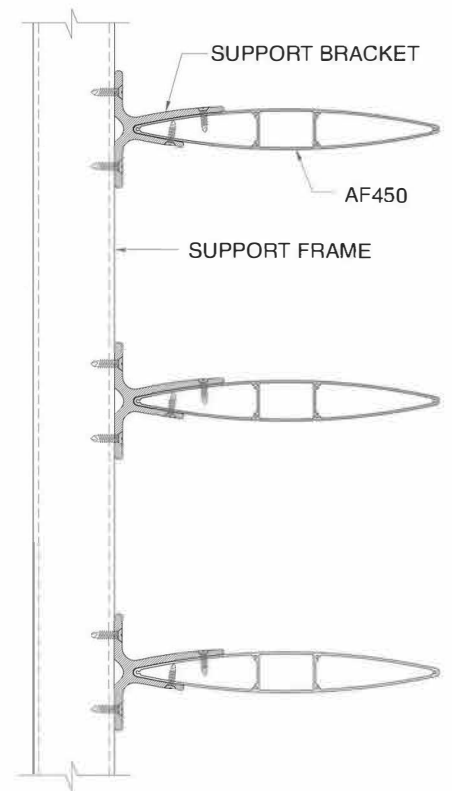
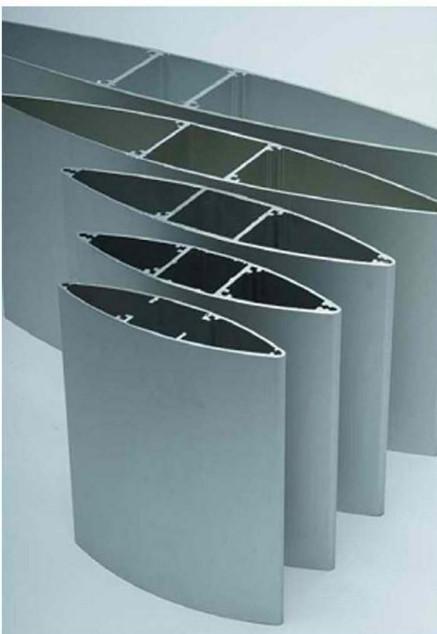


MATERIAL	THICKNESS	RECOMMENDED MAX. LENGTH		COLORS
		m	ft	
Aluminum	3.0	5.1	16.73	Various RAL and woodgrain colors available

DX-AF350



MATERIAL	THICKNESS	RECOMMENDED MAX. LENGTH		COLORS
		m	ft	
Aluminum	2.5	4.8	15.75	Various RAL and woodgrain colors available



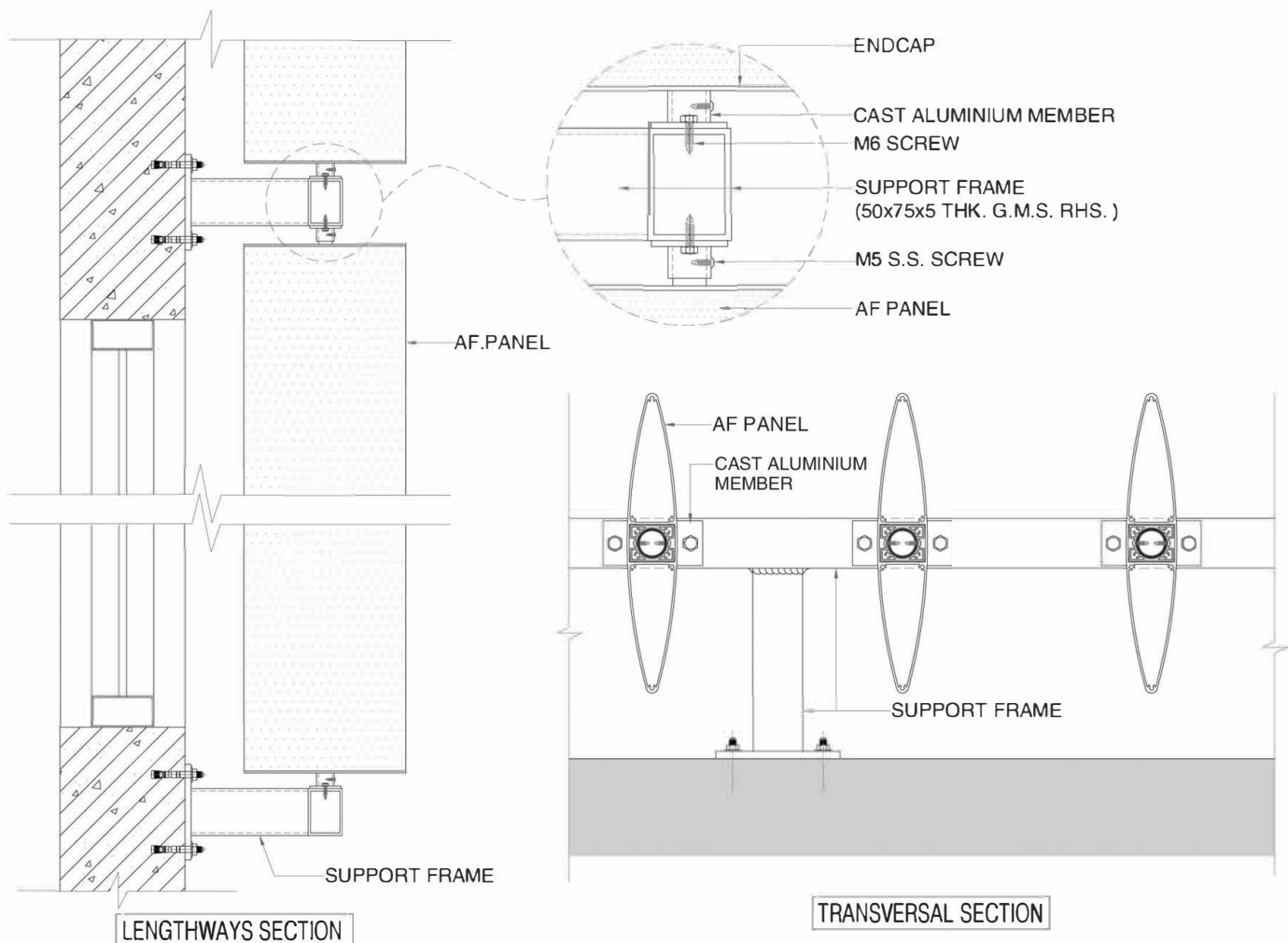
Surface treatment:

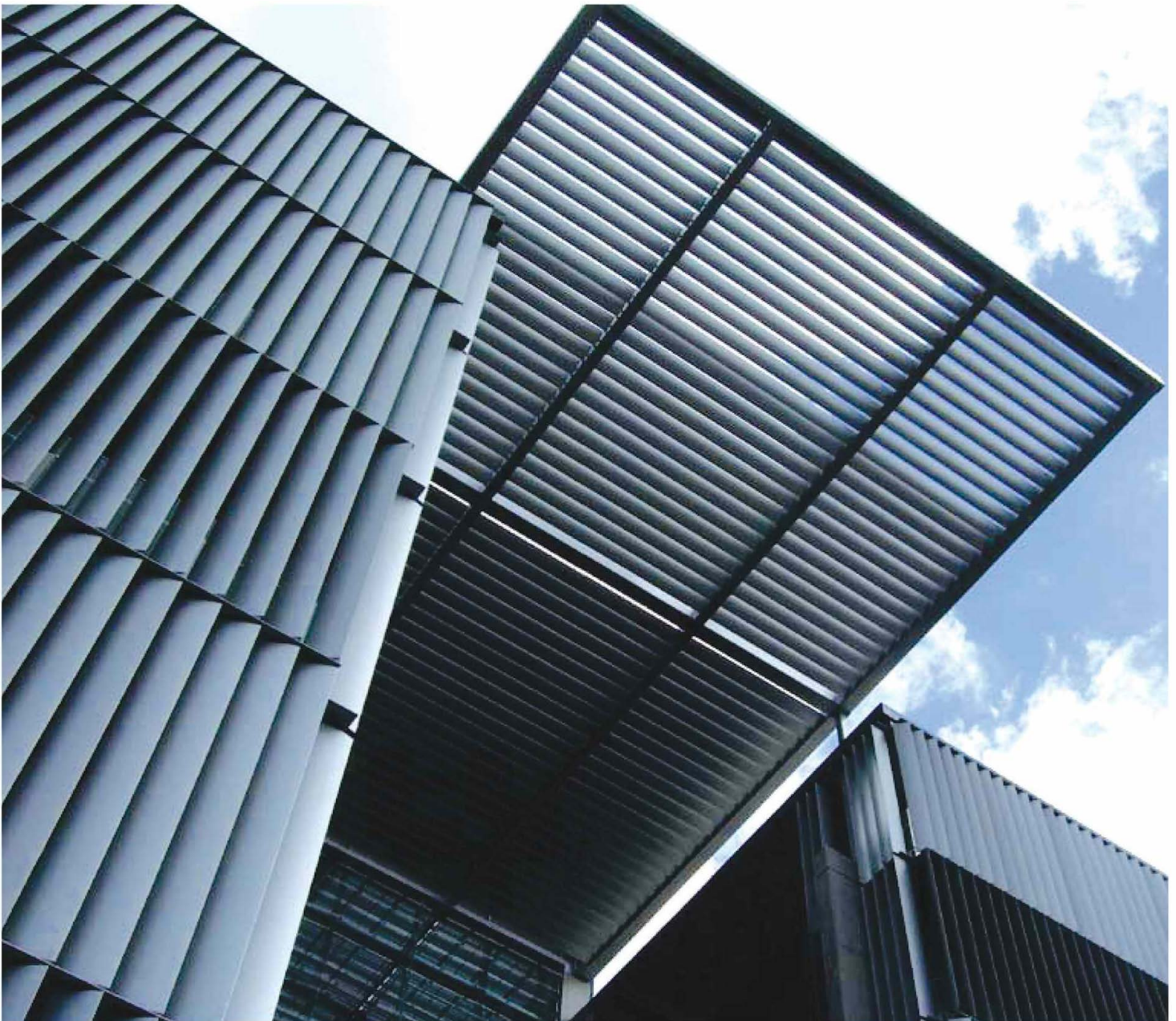
The AF series Aerofoil Sun Louvers panel are available in a selection of standard RAL and woodgrain colors. The surface can be anodized, PVDF spraying or powder coating.

AEROFOIL DX-AF600/450/400/350



The AF series Aerofoil Sun Louvers can be installed in horizontal or vertical or other ways, it is according to the design and the angle of the sunshine. The width, installation angle, spacing between panels are up to the design of the sun control, considering the construction and environment.





Installation:

AF350~600 series Aerofoil Sun Louvers are a structure consisting of steel supporting frame and aluminum extrusion.

Distribution of the steel frame and the spacing between the carries is up to the weight of the aluminum extrusion, wind pressure and load carrying capability of the panel.

The supporting frame is made of stainless steel or G.I. Steel which is fixed to the carrier by screw or welding.

The frame consist of supporting frame and adjustment bracket. The supporting frame is the main carrying part, the adjustment bracket is to adjust the angle of the sun louvers panel and avoid the drop of the sun louvers panel.

R20 or R25 aluminum tube is supporting roller, firstly assembling the supporting roller with the endcap into the sun louvers panel, then fix the supporting roller directly into the supporting bracket. At last, put the adjustment part into the supporting bracket.

Every sun louvers panel is detachable, safe and deluxe outlook.



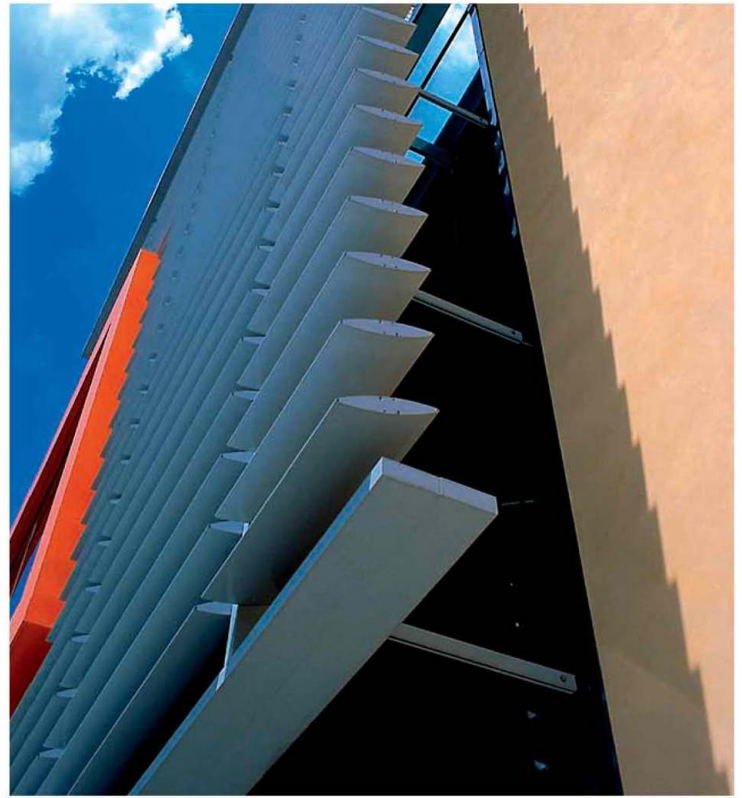
Description:

AF200~300 series Aerofoil Sun Louvers are medium size sun louvers system. The spacing between panels, spacing between carriers and installation space decrease accordingly. The system can match well with other decorative material and control the sunshine very well.

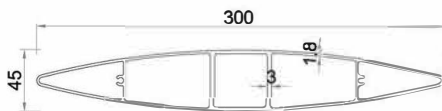
The installation way is flexible, it has 3 ways: A) using supporting roller to fix the AF Panel, B) using supporting bracket to fix the AF panel, C) using supporting panel to fix the AF panel.

This system can also be used as fence, the panel can be small size, and the spacing between panel can be small.

Colors and surface: Anodised, PVDF spraying, or powder coating, RAL colors and woodgrain colors available.



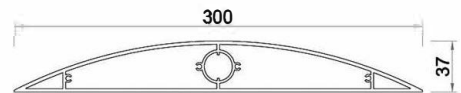
DX-AF300-1



MATERIAL	THICKNESS	RECOMMENDED MAX. LENGTH		COLORS
	mm	m	ft	
Aluminum	1.8	4.8	15.75	Various RAL and woodgrain colors available

DX-AF300-2

 SUPPORTING ROLLER



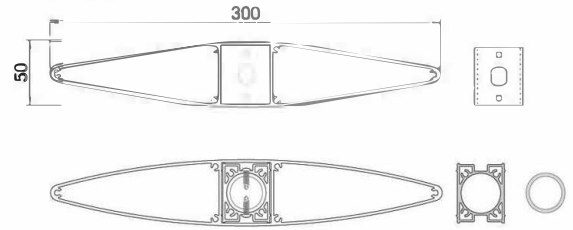
MATERIAL	THICKNESS	RECOMMENDED MAX. LENGTH		COLORS
	mm	m	ft	
Aluminum	2.5	4.8	15.75	Various RAL and woodgrain colors available

AEROFOIL DX-AF300/250/200



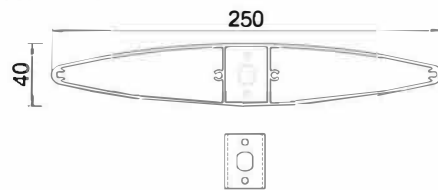
The AF series Aerofoil Sun Louvers can use the same installation structure of the existing decorative material. It's easy to install, and also reduce maximum material cost and installation cost.

DX-AF300-3



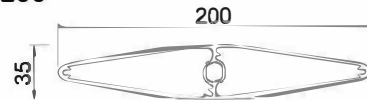
MATERIAL	THICKNESS	RECOMMENDED MAX. LENGTH		COLORS
		m	ft	
Aluminum	2.5	4.8	15.75	Various RAL and woodgrain colors available

DX-AF250

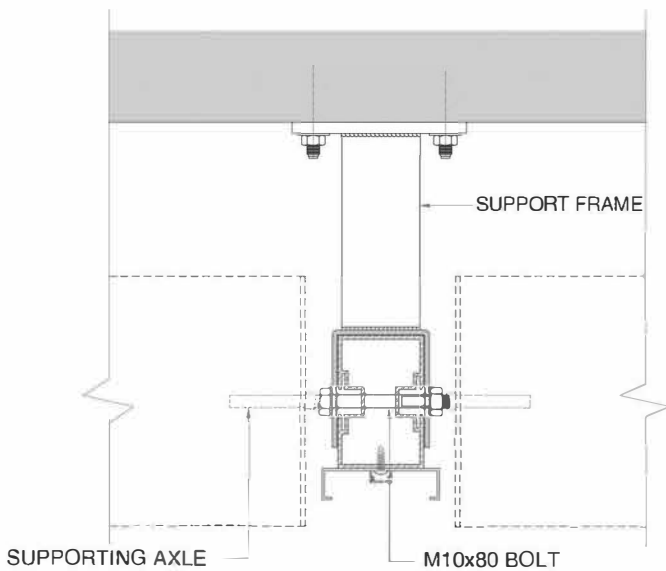


MATERIAL	THICKNESS	RECOMMENDED MAX. LENGTH		COLORS
		m	ft	
Aluminum	2.0	4.2	13.78	Various RAL and woodgrain colors available

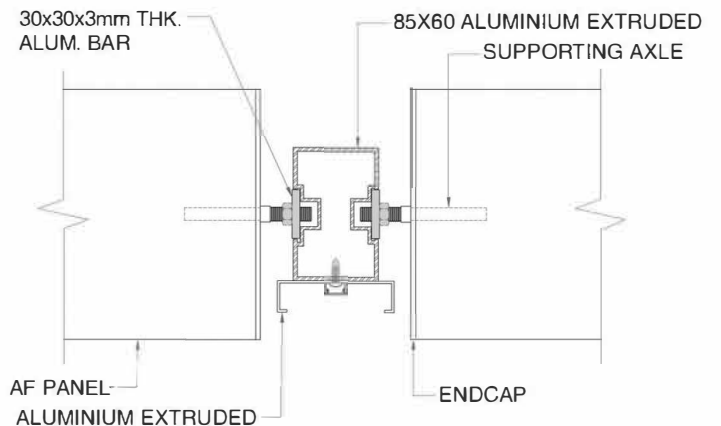
DX-AF200



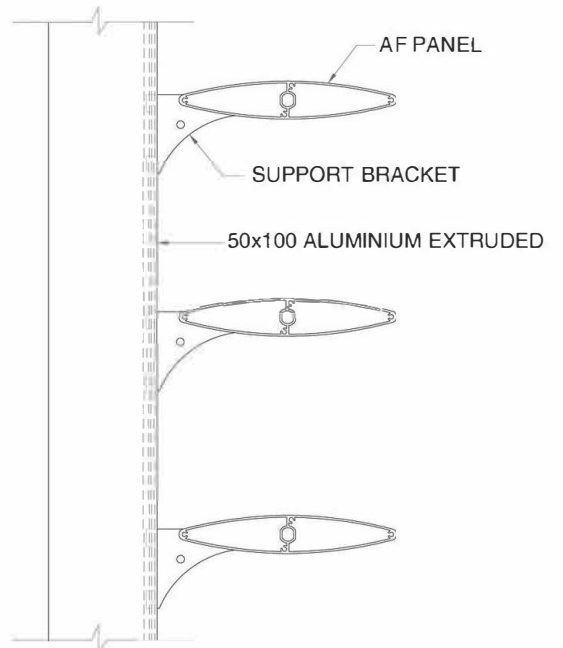
MATERIAL	THICKNESS	RECOMMENDED MAX. LENGTH		COLORS
		m	ft	
Aluminum	1.5	3.5	11.48	Various RAL and woodgrain colors available



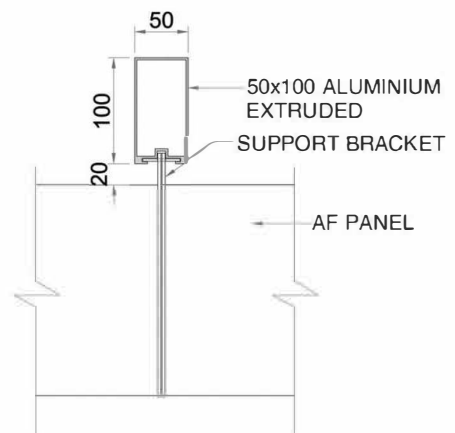
STRUCTURAL SECTION 1



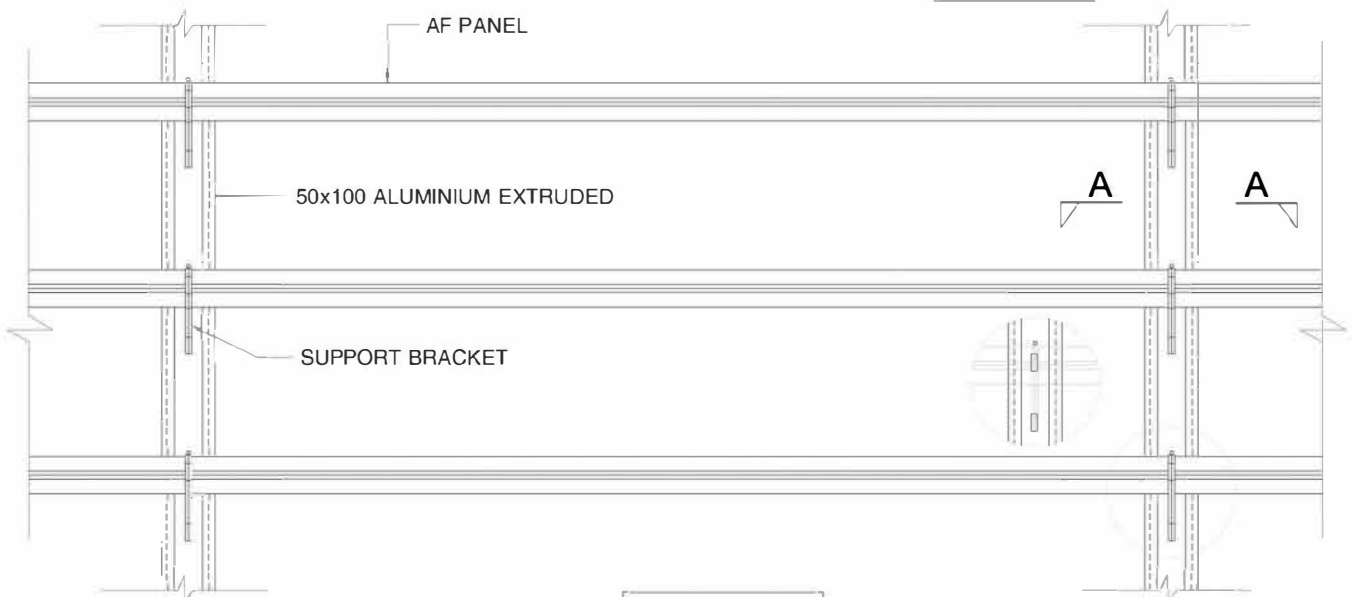
STRUCTURAL SECTION 2



SIDE ELEVATION

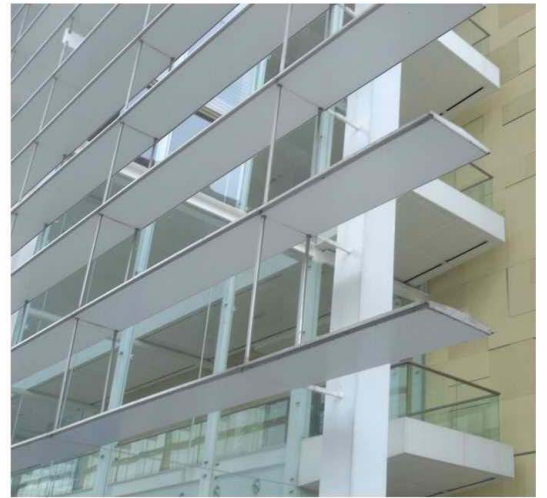


A-A SECTION

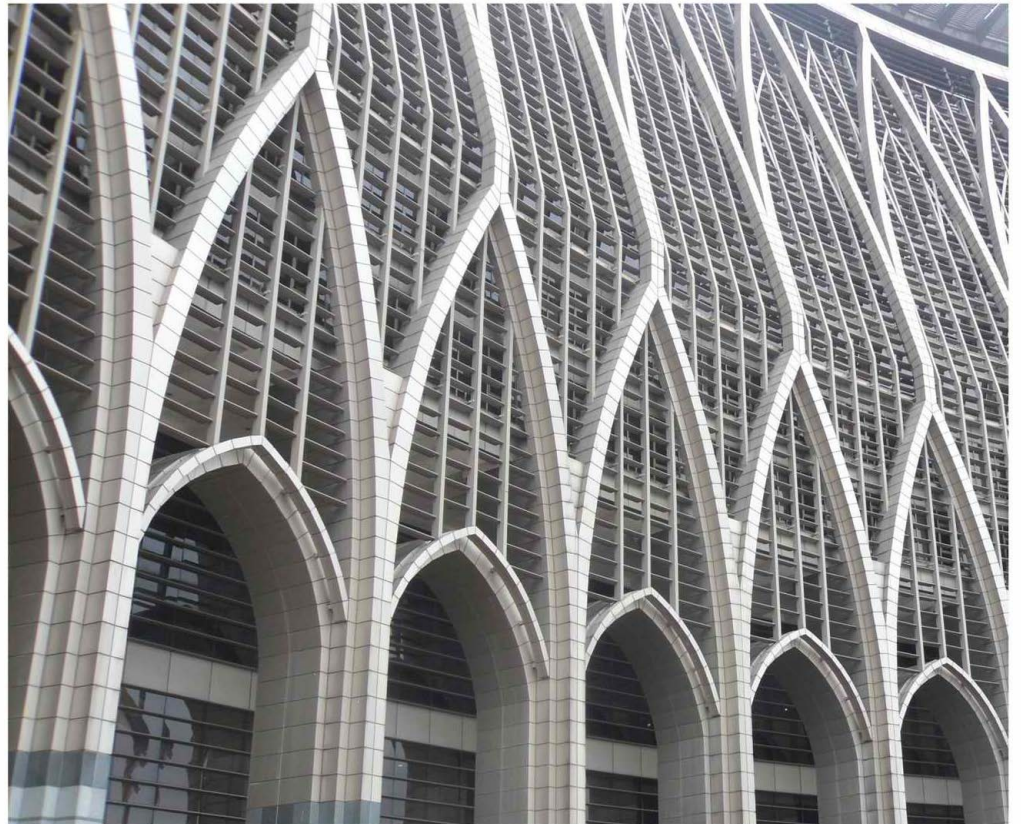


FRONT ELEVATION

AEROFOIL DX-AF300/250/200



AF series Aerofoil Sun Louvers are mainly in elliptic shape, other shapes can also be made according to customer's order, like trapezoidal, rhombic or other special design. The AF series of Aerofoil Sun Louvers can be curved, elliptic, or special corner treatment according to the decorative request and construction, it is supplied together with specially designed accessories.

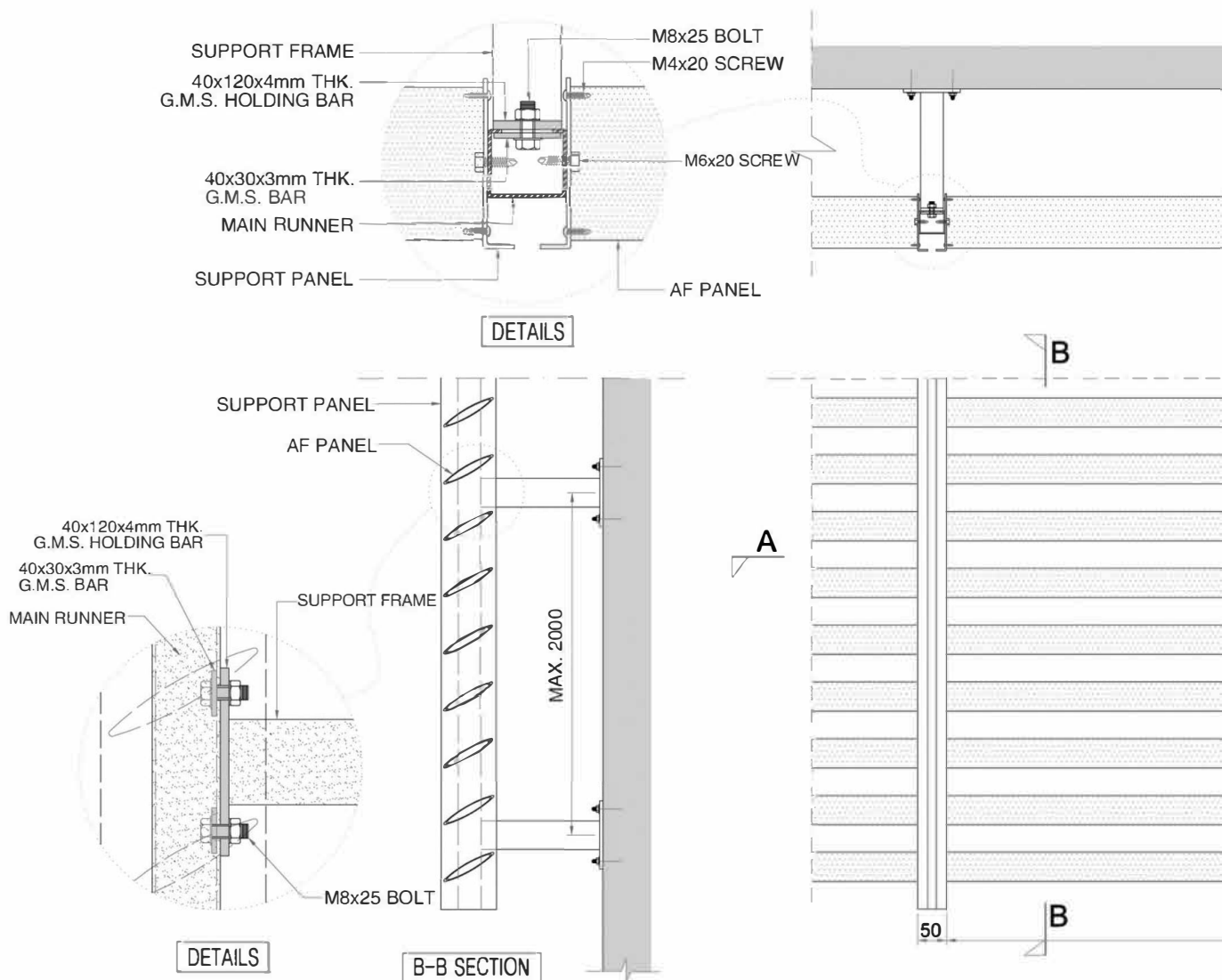


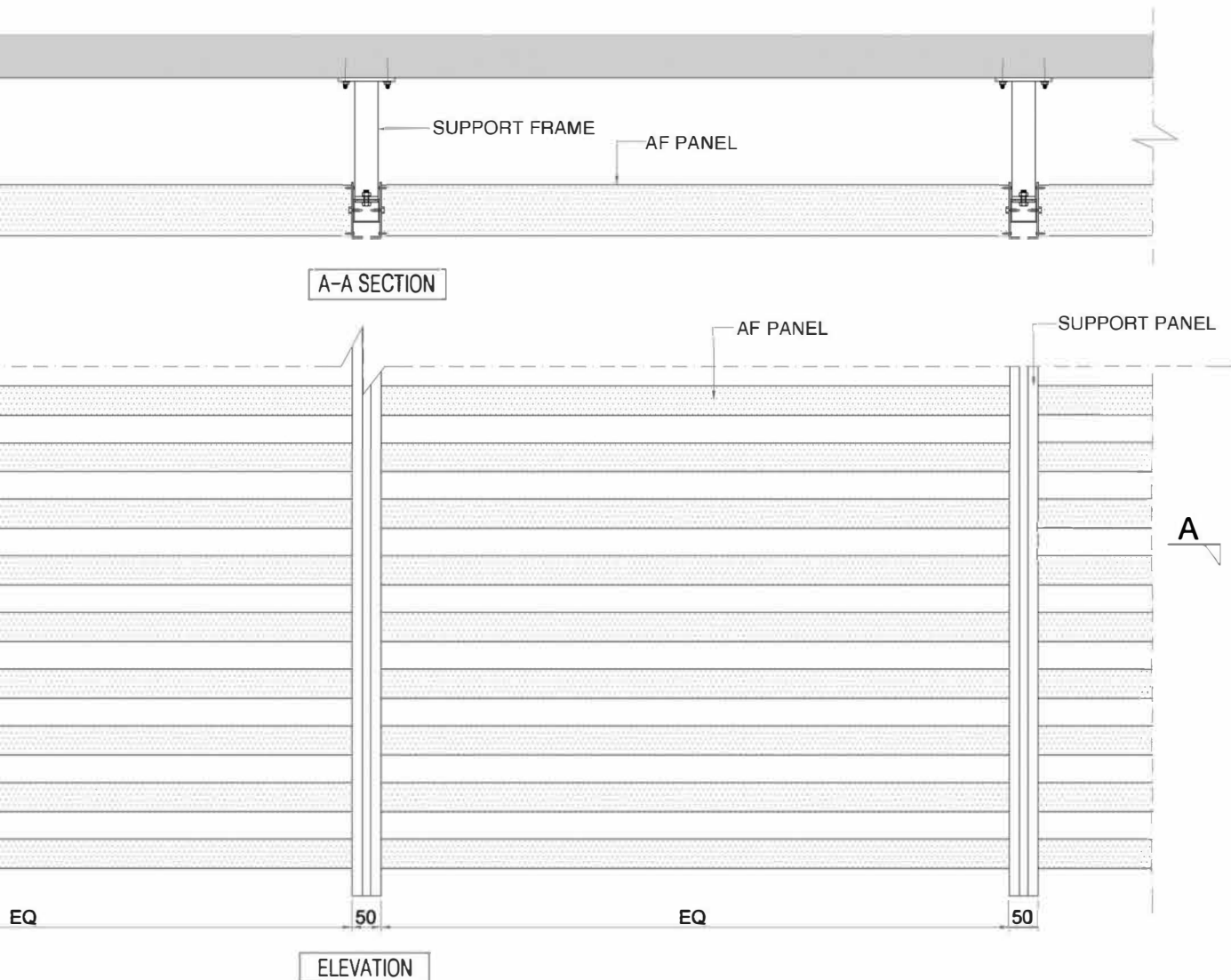


Description:

AF75~150 series Aerofoil Sun Louvers are small size sun louvers system. It's light and small space occupation, simple appearance and structure. This system can match well with other decorative material, and control the sunshine very well. It is widely utilized at office, house, factory, school, hospital, commercial and public buildings, to create better living and working conditions by controlling light infiltration.

The system has two installation ways: single frame and continuous frame. A) single frame way is to put the sun louvers panel into the aluminum or metal frame directly, it is used for door or window decoration and sun control design. B) continuous frame installation way is suitable for big size installation space. It is installed by supporting frame, consisting of main carrier and supporting panel, fixing the sun louvers panel into the supporting panel by screw. This installation way is easy and efficient cost.



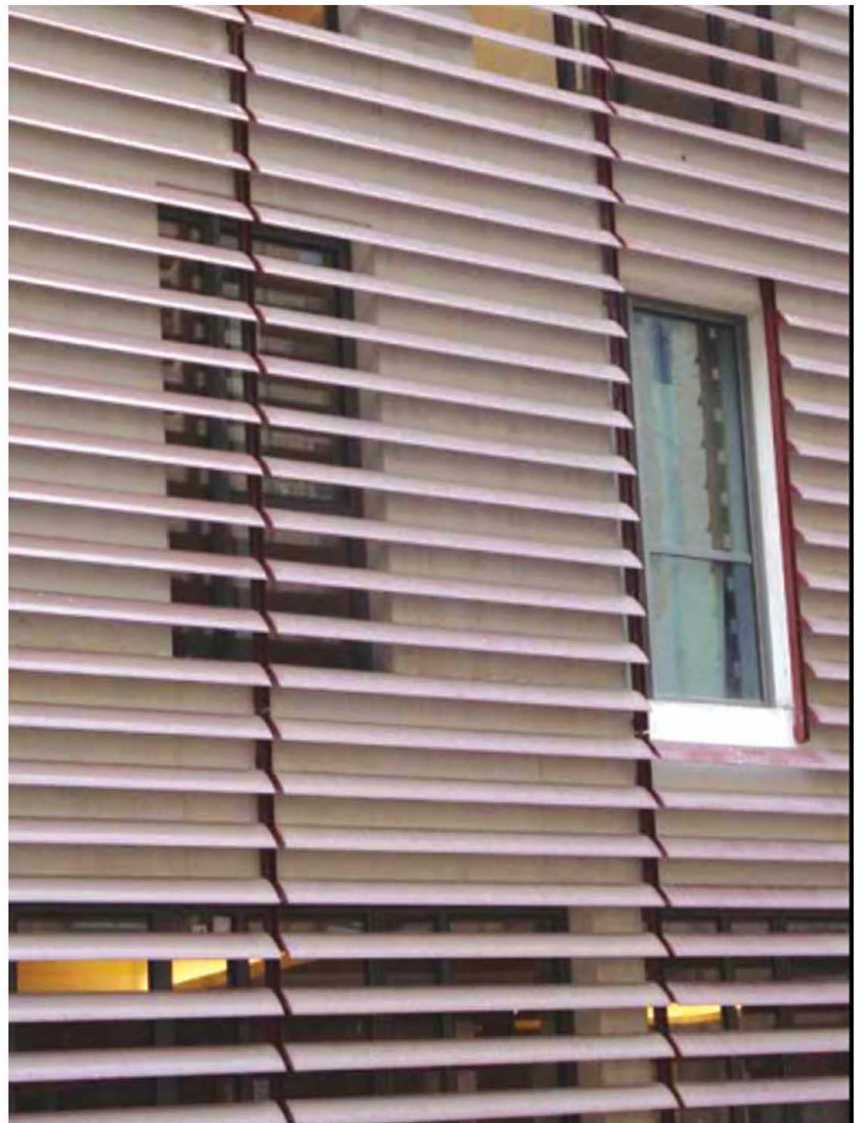




<p>DX-AF150</p>	<p>DX-AF120</p>
<p>DX-AF100</p>	<p>DX-AF92</p>
<p>DX-AF75</p>	

TYPE	DESCRIPTION	MATERIAL	THICKNESS	RECOMMENDED MAX. LENGTH-(EQ)		MAXIMUM DISTANCE BETWEEN CARRIERS	COLORS
				mm	m		
CARRIER	MAIN RUNNER	G.M.S. Plate	2.0	4	13.12	2850	Various RAL and woodgrain colors available
	SUPPORT PANEL	Aluminum	2.5	2.4	7.87		
AF-LOUVERS PANEL	AF150	Aluminum	1.5	2.8	9.19	2250	Various RAL and woodgrain colors available
	AF120		1.3	2.2	7.22	1550	
	AF100		1.2	1.5	4.92	1850	
	AF92		1.1	1.8	5.91	1250	
	AF75		1.1	1.2	3.94		

Colors and Surface: The surface of the panel can be anodized, PVDF spraying or powder coating. Various RAL colors and woodgrain colors are available.



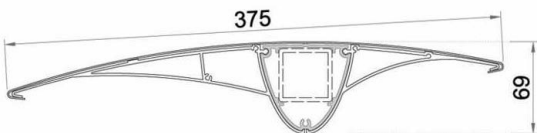
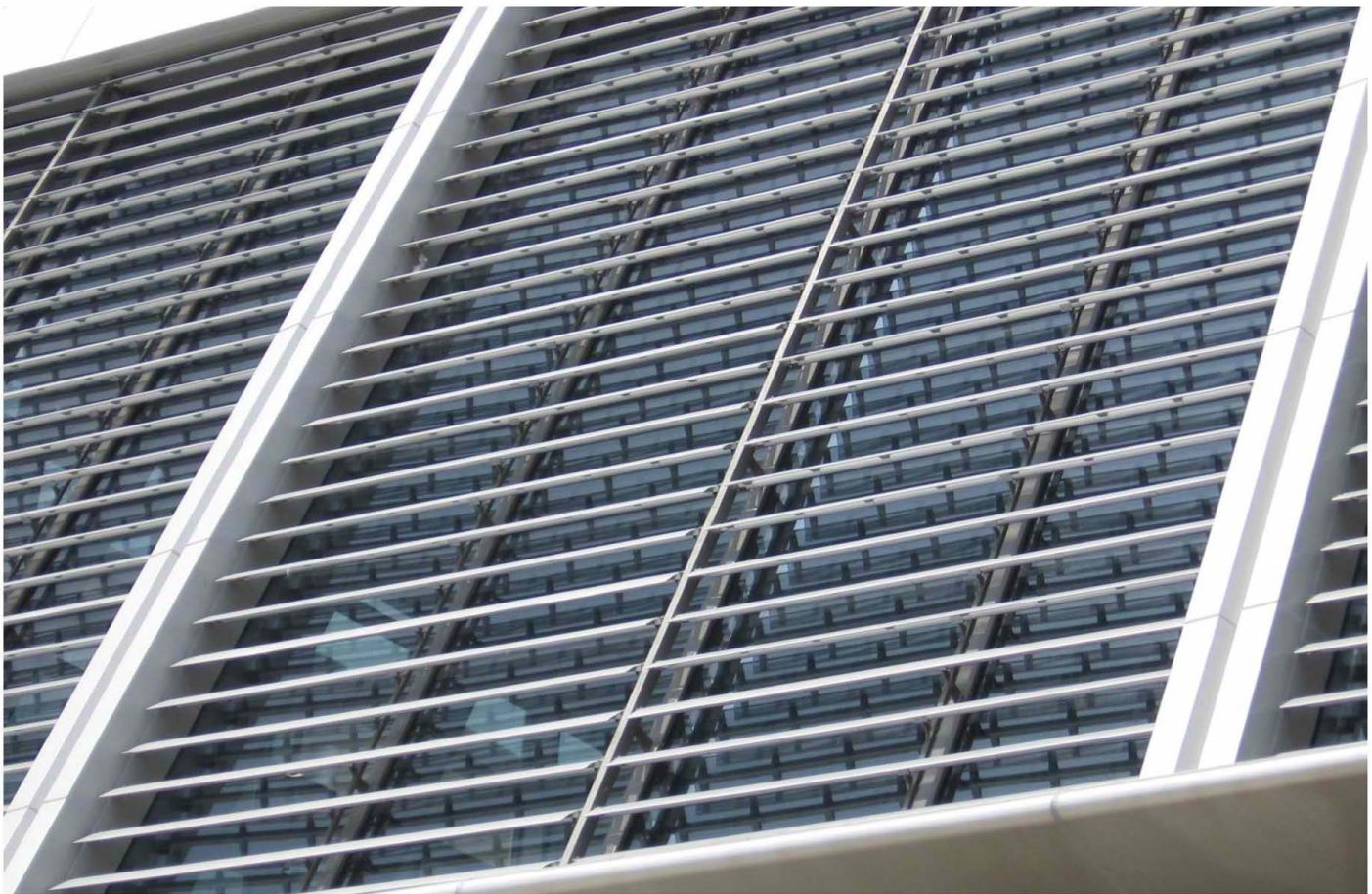
Description:

DEXONE AW series Aerowing Sun Louvers are combined type sun louvers,consisting of AW aluminum sun louvers panel,supporting axle and supporting frame.Maximum length 4000mm,maximum width 800mm,it can be made to be different shape and length according to design.

AW series Aerowing Sun Louvers features:

1. It can be perforated, increasing light transmittance,perforation open area can be 10~50%,different perforation pattern and open area is available for choice,please refer to P37.
2. Sun louvers panel is made up of aluminum panel,cold rolled forming, width and radian can be adjusted as request.
3. Light weight, strong wind resistance.The weight is only 1/2 as same area of AF series Aerofoil Sun Louvers. The panel is perforated,it can strengthen the wind resistance.
4. Simple structure, easy to install, AW series Aerowing Sun Louvers are combined structure: fix the supporting axle and frame first, then install the panel. It has no limited by installation space and direction, It can be installed by screw, very easy.

Colors and Surface: The surface of the panel can be anodized,PVDF spraying or powder coating. Various RAL colors and wood grain colors are available.



COMBINATING DETAILS



1mm THK. ALUMINUM PANEL
PERFORATION OR NON-PERFORATION



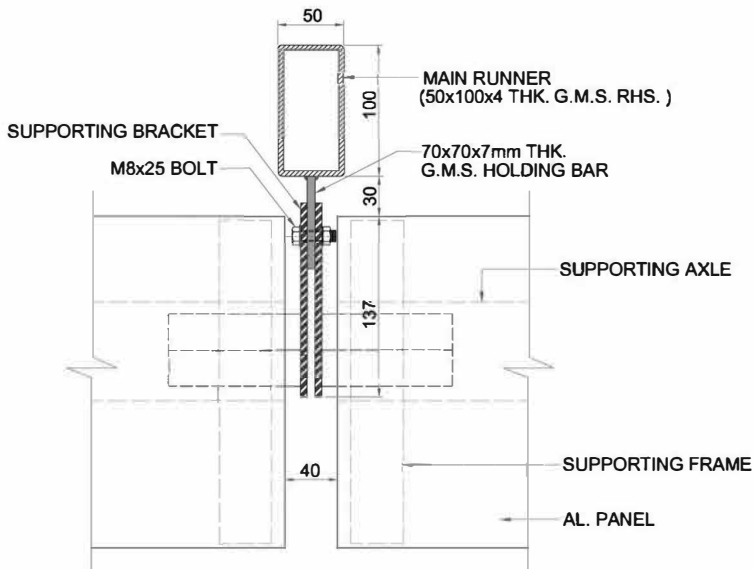
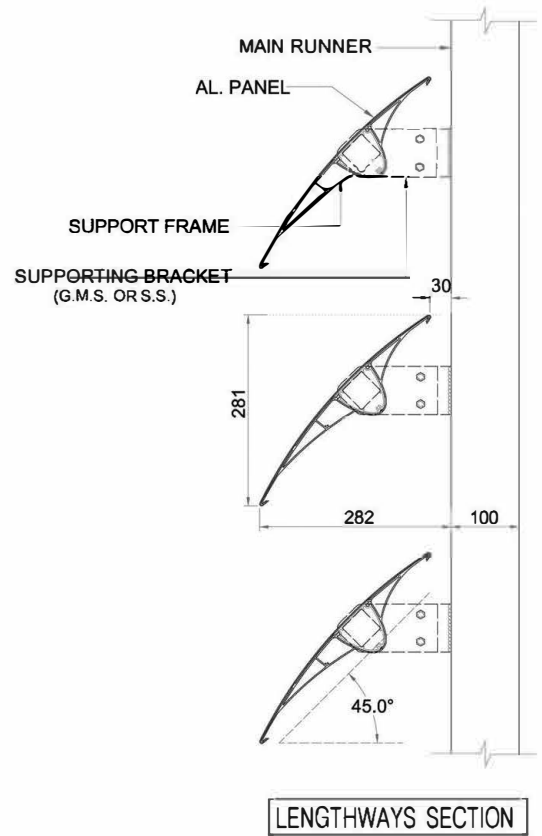
SUPPORTING AXLE
(AL. EXTRUDED)



SUPPORTING FRAME
(AL. EXTRUDED)



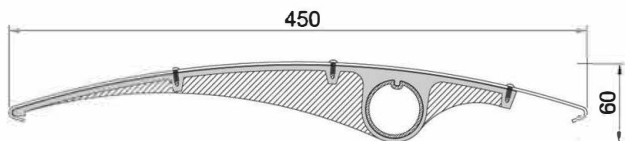
SUPPORTING BRACKET
(G.M.S. OR S.S.)



TRANSVERSAL SECTION



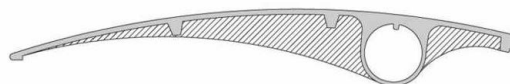
AEROWING DX-AW450



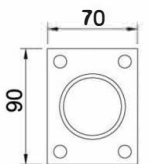
COMBINATING DETAILS



2mm THK. ALUMINUM PANEL
PERFORATION OR NON-PERFORATION



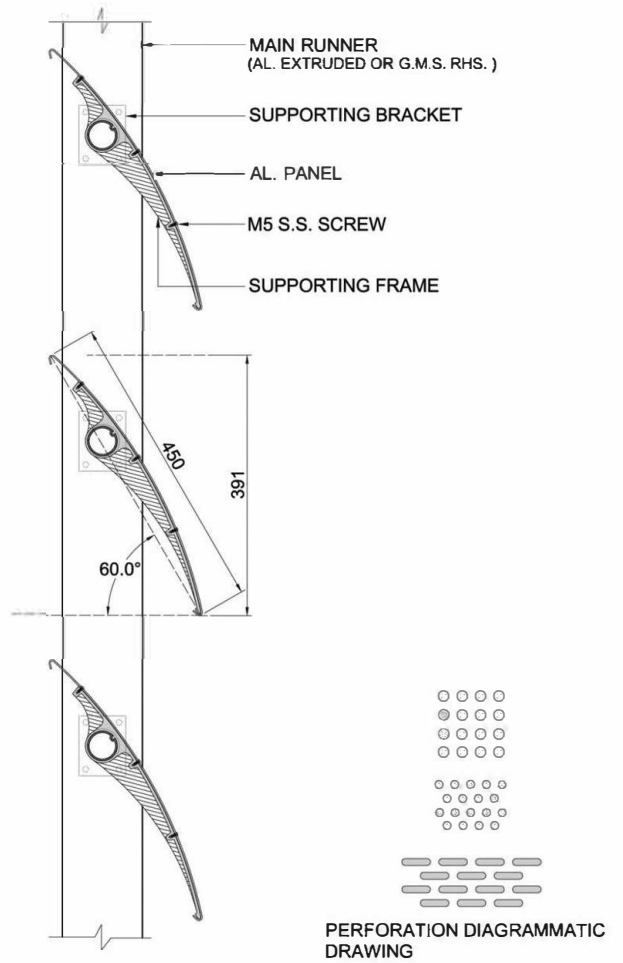
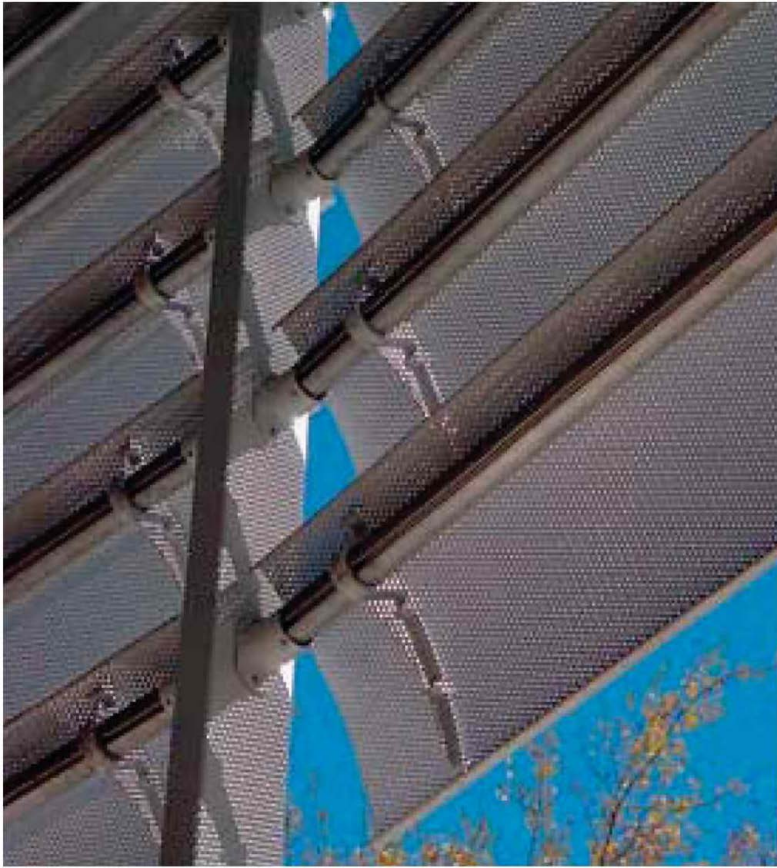
SUPPORT FRAME
(CAST AL. MEMBER)



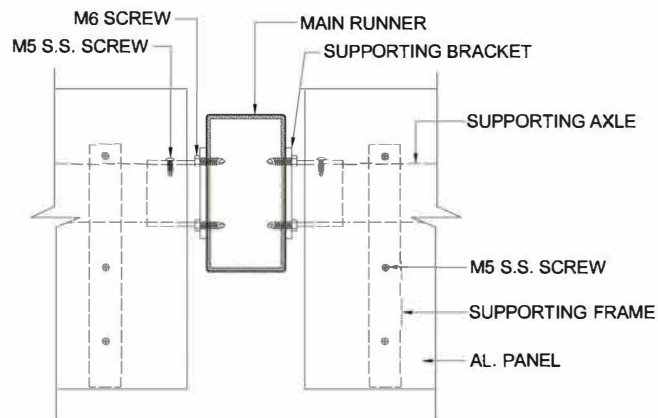
SUPPORTING BRACKET
(CAST AL. MEMBER)



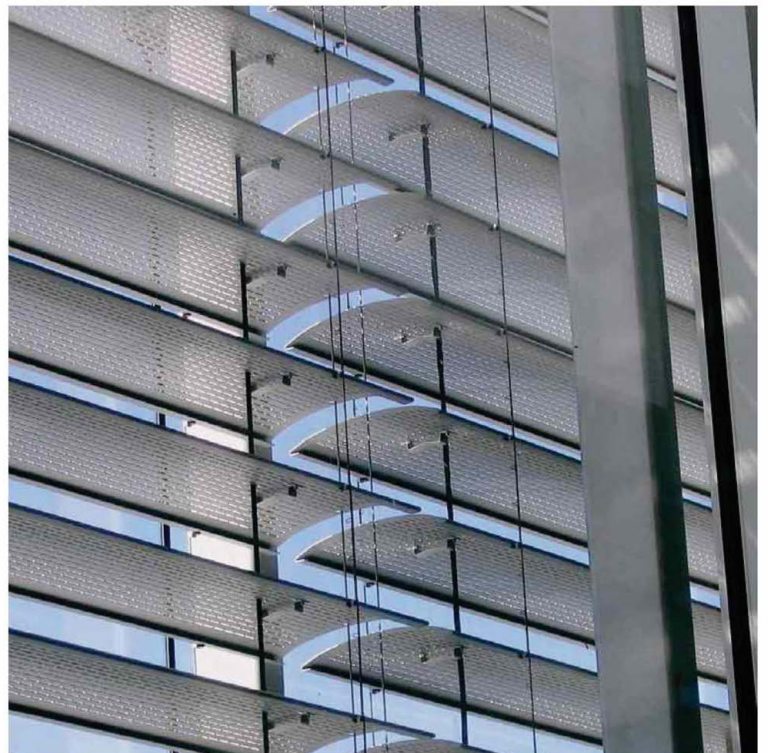
SUPPORTING AXLE
(AL. EXTRUDED)



LENGTHWAYS SECTION



TRANSVERSAL SECTION



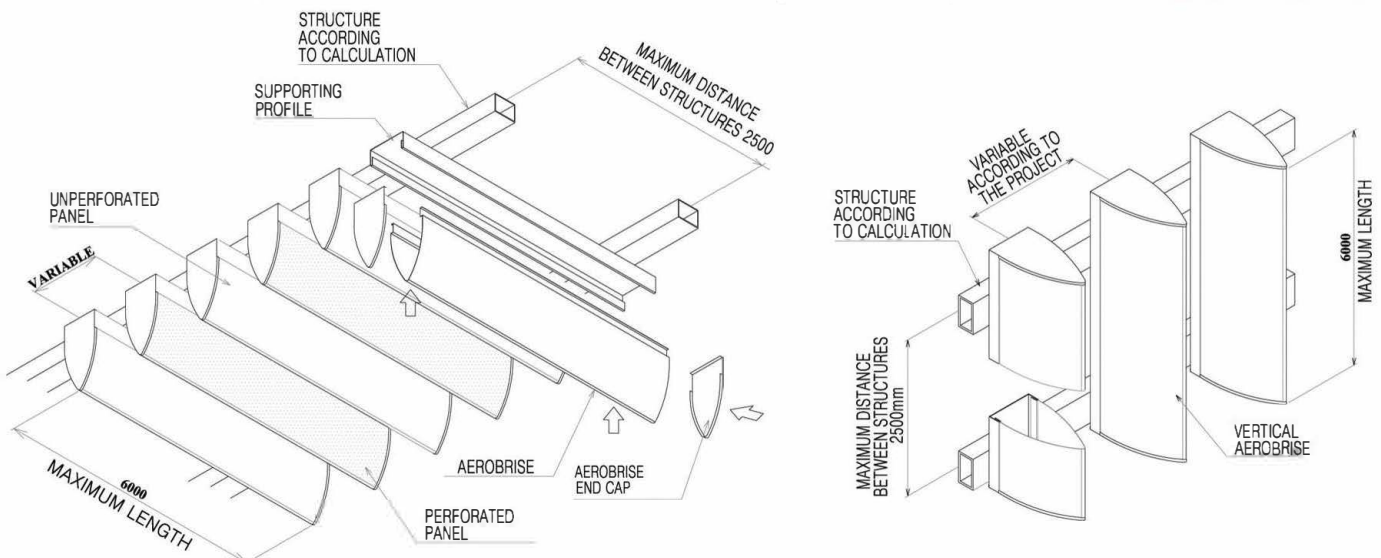
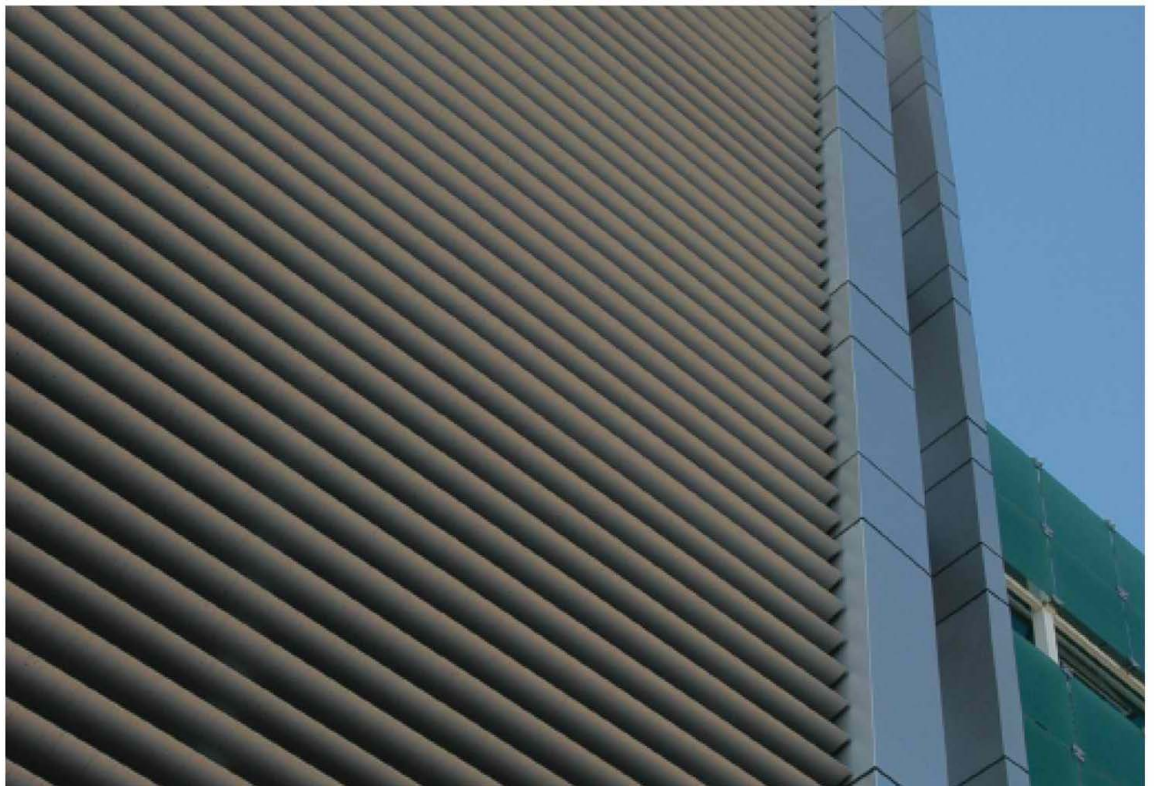
Description :

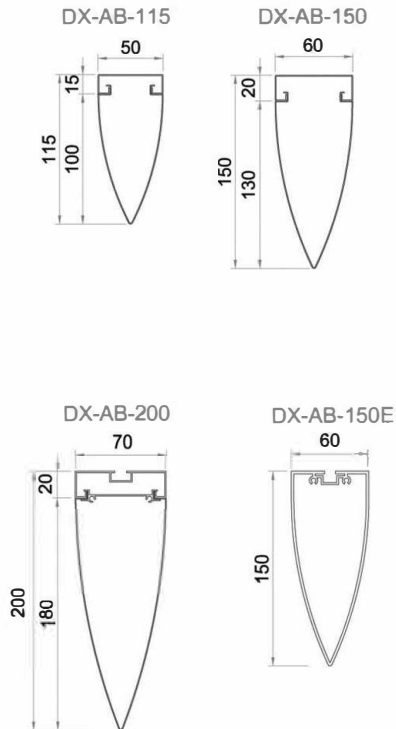
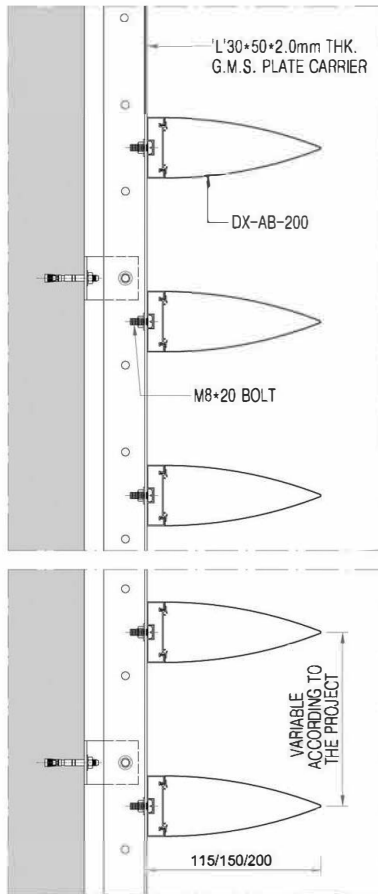
DEXONE AB series Aerobrise Sun Louvers are in half elliptical shape. AB series have three types: aluminum panel Aerobrise, mixed combined Aerobrise and aluminum extrusion Aerobrise.

- Aluminum panel Aerobrise is made up of 0.6~0.8mm aluminum panel, consisting of Aerobrise, supporting profile and Aerobrise endcap. Width 115mm and 150mm, maximum length 3000mm, surface can be PVDF spraying or powder coating. With elegant outline, light weight, low cost, easy to install. It can be installed to the frame or wall by M5 screw.

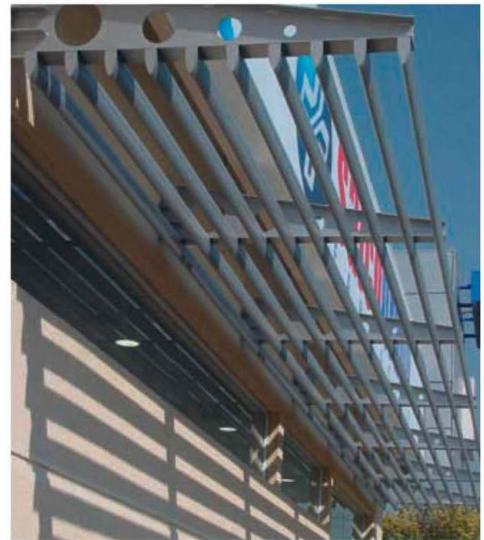
- Mixed combined Aerobrise consists of aluminum panel and aluminum extrusion. Aerobrise is made of 0.6~0.8mm aluminum panel, support profile is made of aluminum extrusion. Width 150mm and 200mm, maximum length 3000mm. Surface can be PVDF spraying or powder coating. There is dedicated slot in supporting profile, fixed by M8 to L30 × 50 × 2.0mm thick GMS Plate carrier. Safe structure, easy to install, it can be used as sun louvers or metal ceiling.

- Aluminum extrusion Aerobrise is single extrusion, thickness 2.0mm, width 150mm, maximum length 5.8meter, surface can be PVDF spraying, powder coating or anodized. Elegant outline, high strength, it is widely used for the distance between two carriers over 2500mm.

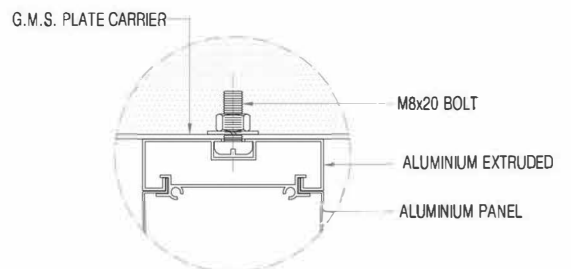
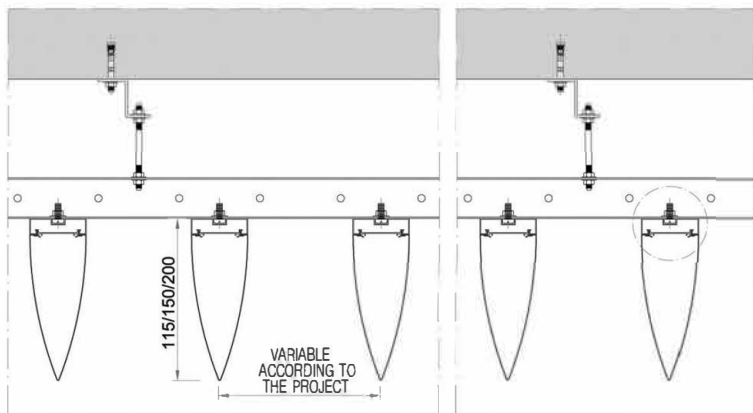




PRODUCT DETAILS



DESCRIPTION		MATERIAL	THICKNESS	RECOMMENDED MAX. LENGTH		MAXIMUM DISTANCE BETWEEN CARRIERS	COLORS
				mm	m		
CARRIER		Aluminum Or G.M.S. STRUCTURE ACCORDING TO CALCULATION		5.8	19.03	2500	Various RAL and woodgrain colors available
AEROBRISE PANEL			Aluminum	0.6	2.9	9.515	VARIABLE ACCORDING TO THE PROJECT
DX-AB115		0.7					
DX-AB150		1.0+0.7					
DX-AB200		2.0		5.8	19.03		
DX-AB150E							



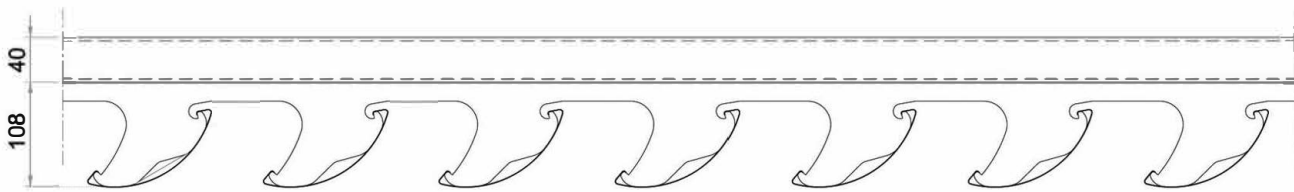
Description:

DEXONE CR160 Celoscreen Sun Louvers are made up of 0.8mm thick aluminum panel, roll formed, in 1/4 elliptical shape. Vertical width of the panel is 141.5mm, both ends edging inside, can clip into the carrier directly. The carrier pitch can be 120mm, 150mm, 175mm. This system can be used as both sun louvers and metal ceiling.

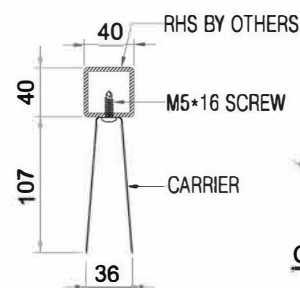
Material:

CR160 Sun Louvers panel is made up of 0.8mm thick aluminum panel, vertical width of the panel is 141.5mm, arc length 160mm, maximum length 4000mm. The panel can be perforated, open area 12%~21%. The surface of the panel can be PVDF spraying, powder coating or pre-painted.

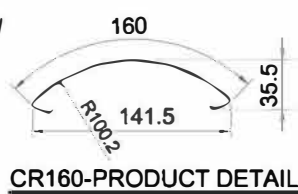
CR carrier is made up of 1.0mm thick GMS steel, width 108mm, maximum length 4000mm, the angle of the latch is 60 degrees, It has 3 pitches: 120mm, 150mm, 175mm, providing several options of openness to obtain an adequate sun protection. The surface of the CR carrier can be PVDF spraying and powder coating.



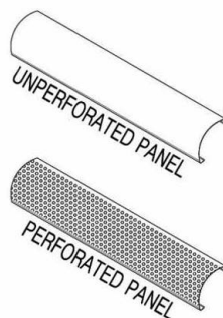
CR160-SECTION



CARRIER DETAILS



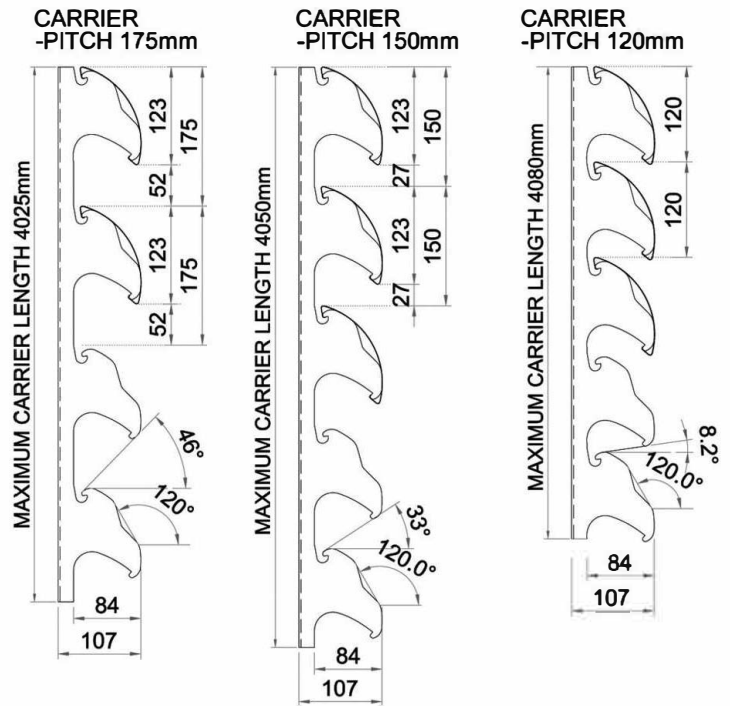
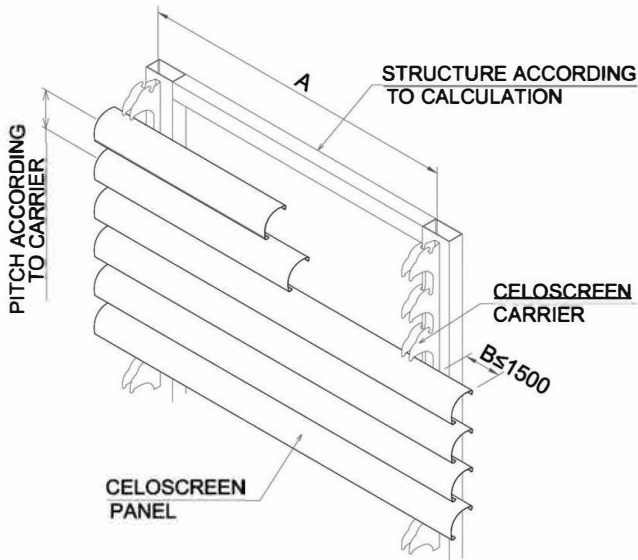
CR160-PRODUCT DETAIL



PERFORATION PATTERNS

# A-01 φ3mm 20% OPEN ← 6.35mm ↓ 5.5mm	# A-02 φ2.5mm 16% OPEN ← 5.5mm ↓ 5.5mm	# A-03 φ4mm 21% OPEN ← 9.53mm ↓ 8.25mm	# A-04 φ4mm 12.5% OPEN ← 10mm ↓ 10mm

CELOSCREEN DX-CR160



Installation:

The CR carrier is in “U” shape, there is installation hole inside of the carrier, fixed directly to the wall or steel frame by screw. It can also be used as metal ceiling, hanged by ϕ 8mm bolt, distance suspended between two carriers is 1000~1500mm. The CR panel can be clipped into the carrier directly, each panel can be removed or installed separated. The panel can be installed either vertical, horizontal or in angled surface.

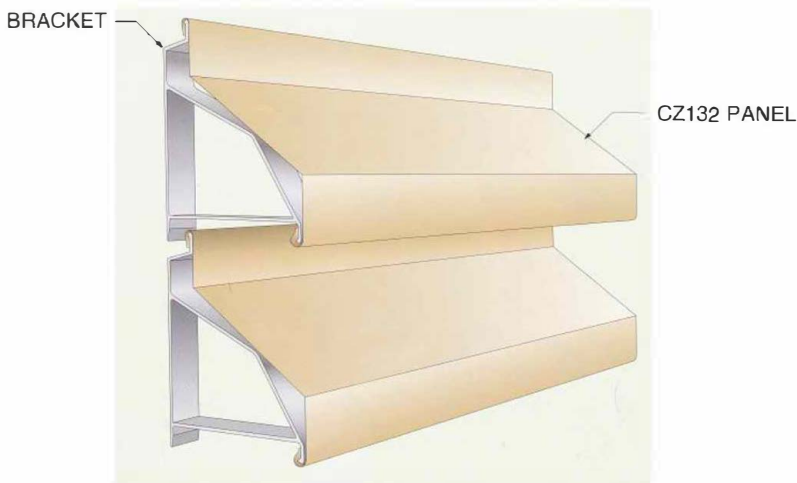
DESCRIPTION		MATERIAL	THICKNESS		RECOMMENDED MAX. LENGTH		MAXIMUM DISTANCE BETWEEN CARRIERS	COLORS
			mm	in	m	ft		
TYPE								
CARRIER		Aluminum	1.0	0.039	4.08	13.39	Inside: 900~1200 Outside: 800~1000	Various RAL and woodgrain colors available
		G.M.S.	0.8	0.031	4.08	13.39		
CELOSCREEN PANEL	CR160-120	Aluminum	0.8	0.031	4	13.12		Various RAL and woodgrain colors available
	CR160-150							
	CR160-175							

Description:

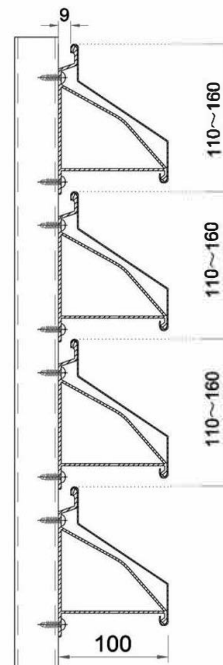
DX-CZ series Celoscreen Sun Louvers are made up of 0.6mm thick aluminum panel, roll formed, in “Z” shape, consisting of two vertical face and one bevelled face. Vertical height is 132mm, 95mm or 70mm. The surface of the panel can be PVDF spraying, powder coating or pre-painted. According to different space, installed the brackets and DX-CZ sun louvers panel. The two panel’s vertical face can be overlapped, it has excellence function of sun control and waterproof. It is suitable for the area with high demand on sun control and waterproof.

Structure& Installation :

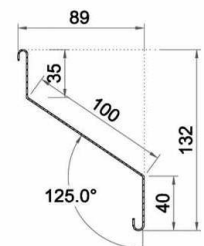
DX-CZ series Celoscreen Sun Louvers are “hook” system, using special aluminum extrusion brackets, fixed to the main carrier (square tube, steel angle or steel groove ect.) by M5 screw. Each brackets are installed independently, the DX-CZ sun louvers panels are hooked into the brackets. The systems are detachable, firmly fixed structure, install and maintain easily.



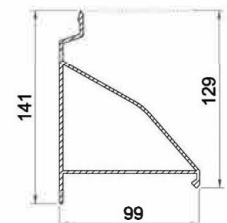
ISOMETRIC DETAILS



CZ132-SIDE VIEW

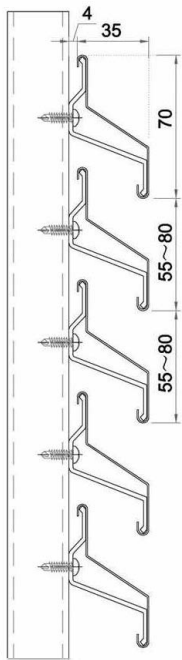


CZ132-PRODUCT DETAILS

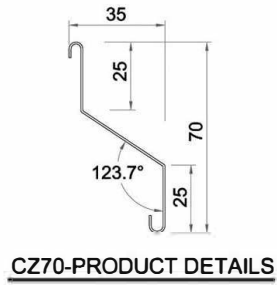


CZ132-BRACKET DETAILS

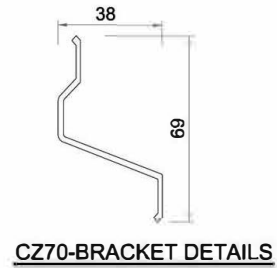
CELOSCREEN DX-CZ132/95/70



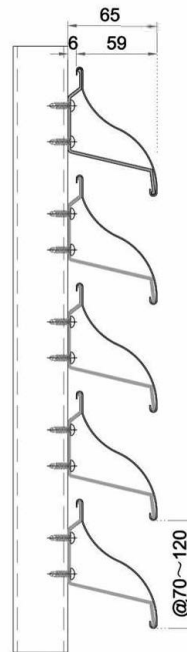
CZ70-SIDE VIEW



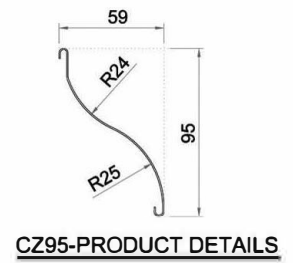
CZ70-PRODUCT DETAILS



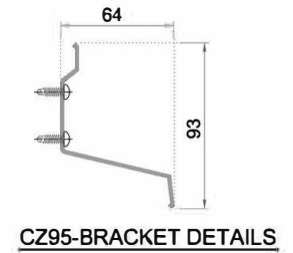
CZ70-BRACKET DETAILS



CZ95-SIDE VIEW



CZ95-PRODUCT DETAILS



CZ95-BRACKET DETAILS

DESCRIPTION		MATERIAL	THICKNESS	RECOMMENDED MAX. LENGTH		MAXIMUM DISTANCE BETWEEN CARRIERS	COLORS
				mm	m		
CARRIER		Aluminum Or G.M.S.	By Other	5.8	13.39	Inside: 900~1200 Outside: 800~1000	Various RAL and woodgrain colors available
BRACKET		Aluminum	2.0				
CZ132/95/70 PANEL	CZ132	Aluminum	0.7	4	13.12		Various RAL and woodgrain colors available
	CZ95	Aluminum	0.6				
	CZ70						



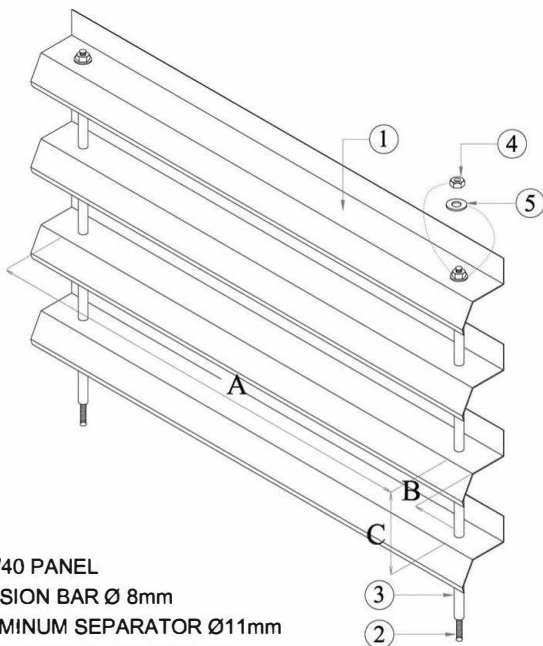
Description:

DX-CS series Celoscreen Sun Louvers are made up of 0.6mm thick aluminum panel, roll formed, in "S" shapes, Vertical height is 23mm or 40mm. The "S" panels can also be installed by ϕ 8mm threaded rod, ϕ 11mm aluminum circular tube. It can also be fixed to the carrier directly by screw. The surface of the panel can be PVDF spraying, powder coating or pre-painted.

Structure & Installation :

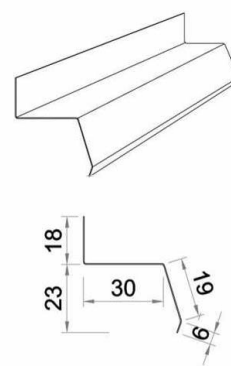
DX-CS series Celoscreen Sun Louvers panels are supported by steel angle, which is hidden in the panel, without any frame. "S" panel and ϕ 11mm aluminum circular tube align to grid, assembly separately, and then fixed to ϕ 8mm threaded rod by screw to steel angle. Two sets of vertical sun louvers panels are connected at the end of ϕ 8mm threaded rod.

The "S" panel can also be fixed to the carrier (square tube, steel angle or U shaped groove) directly. It is applicable on all sites and all shapes. It can be used as sun louvers, waterproof, lower cost, install easy.

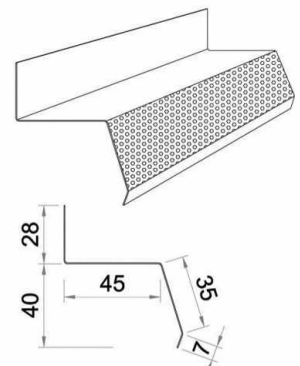


1. C23/40 PANEL
2. TENSION BAR ϕ 8mm
3. ALUMINUM SEPARATOR ϕ 11mm
4. ZINC COATED JAM NUT ϕ 8mm
5. ZINC COATED WASHER ϕ 8mm

MAXIMUM DIMENSIONS	A	B	C
CS23	900	150	35~55
CS40	900	150	60~80



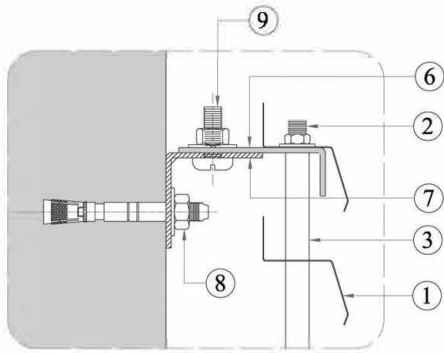
CS23-PRODUCT DETAILS



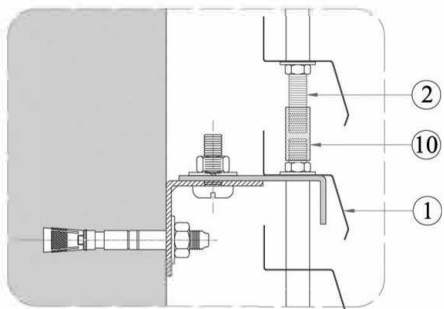
CS40-PRODUCT DETAILS

SUN LOUVRE	MATERIAL	THICKNESS		RECOMMENDED MAX. LENGTH		COLORS
		mm	in	m	ft	
CS23	Aluminum	0.6	0.24	4	12.8	Various RAL and woodgrain colors available
CS40	Aluminum	0.7	0.28	4	12.8	

CELOSCREEN DX-CS23/40

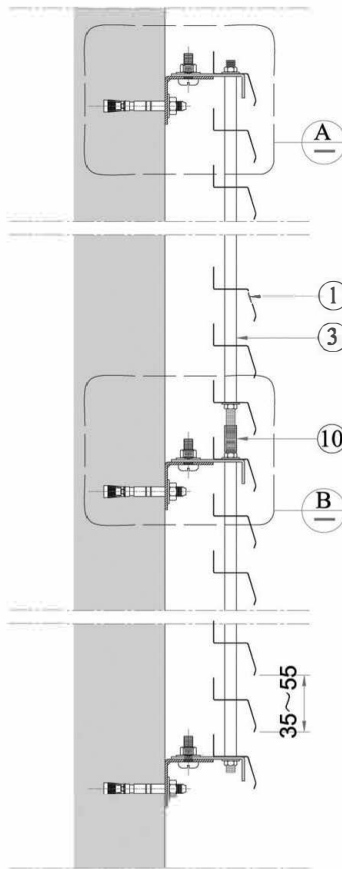


A DETAIL

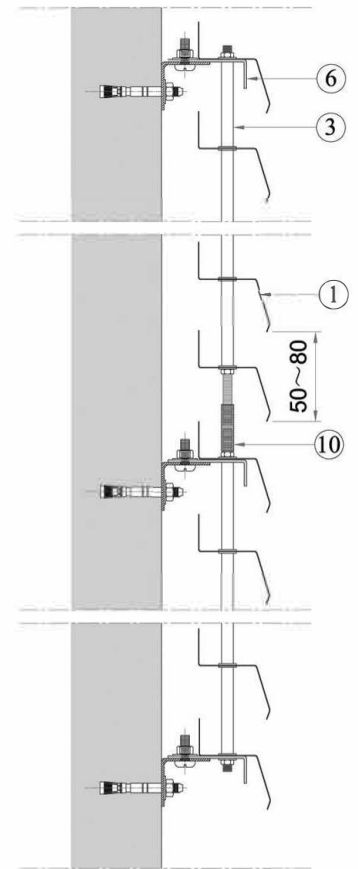


B DETAIL

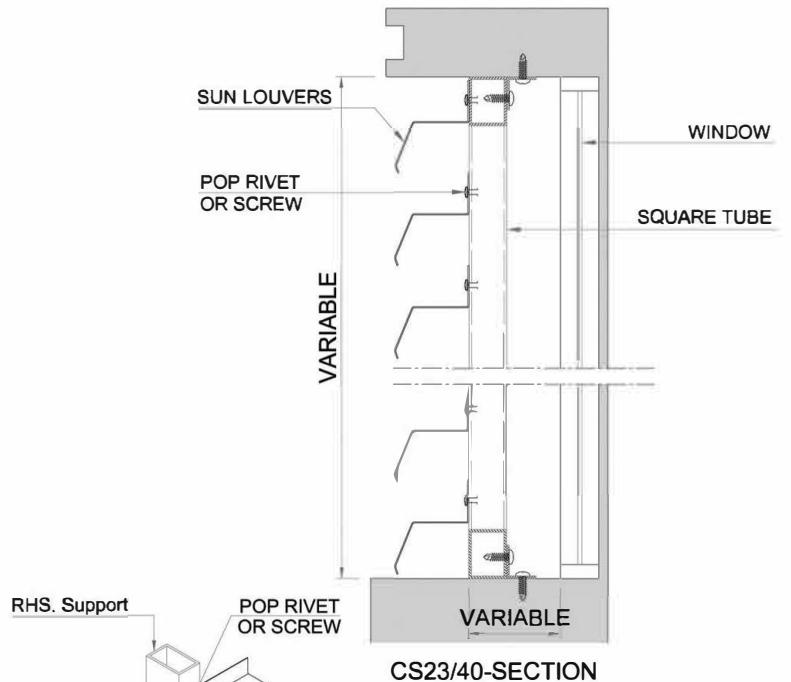
- 6. ZINC COATED PROFILE 60 x 25 x 2
- 7. L50*50*3 THK. BRACKET
- 8. M8x65 STUD ANCHOR
- 9. M6x20 BOLT
- 10. CONNECTOR



CS23-SECTION



CS40-SECTION



CS23/40-SECTION

• Applicable on all sites and all shapes



DESCRIPTION

DX-AC85-25V/90V/45V/66V, DX-AC85-H

- C shape profile
- Light weight clip on carrier system
- Durable and with minimum maintenance required
- Applicable for both interior and external designs
- panel surface treatment: Polyester powder coating, PVDF spraying or pre-painted various RAL and woodgrain colours are available for choice
- Vertical and horizontal installation way are available for choice
- plain and perforation panels are available for choice

MATERIAL SPECIFICATION

DX-AC85-25V/90V/45V/66V, DX-AC85-H

Panel Size	85mm effective width	
Thickness	0.5~0.9mm thick	(Aluminum panels)
Panel End	panels end holding must not exceed 300mm from mullion	
Panel joint	panel joints must be at minimum of 100mm overlapped	

TYPE OF CARRIER

DX-AC85-H	Carrier Size	33mm(W) × 98mm(D) × 3000mm(L)	[maximum carrier interval spacing must not exceed 1200mm c/c and be reverted to hollow section mullion]
	Carrier thickness	1.0mm thick horizontal fixed aluminium carrier	[for height above 10meter, maximum carrier must not exceed 900mm c/c]
DX-AC85-25V	Carrier Size	48mm(W) × 98mm(D) × 3000mm(L)	[maximum carrier interval spacing must not exceed 1200mm c/c and be reverted to hollow section mullion]
DX-AC85-90V	Carrier Size	38mm(W) × 98mm(D) × 3000mm(L)	
DX-AC85-45V	Carrier Size	33mm(W) × 100mm(D) × 3000mm(L)	
DX-AC85-66V	Carrier Size	40mm(W) × 66mm(D) × 3000mm(L)	
	Carrier thickness	1.0mm thick vertical fixed aluminium carrier	[for height above 10metre, maximum carrier spacing must not exceed 900mm c/c]

AVAILABLE CARRIER ANGLE

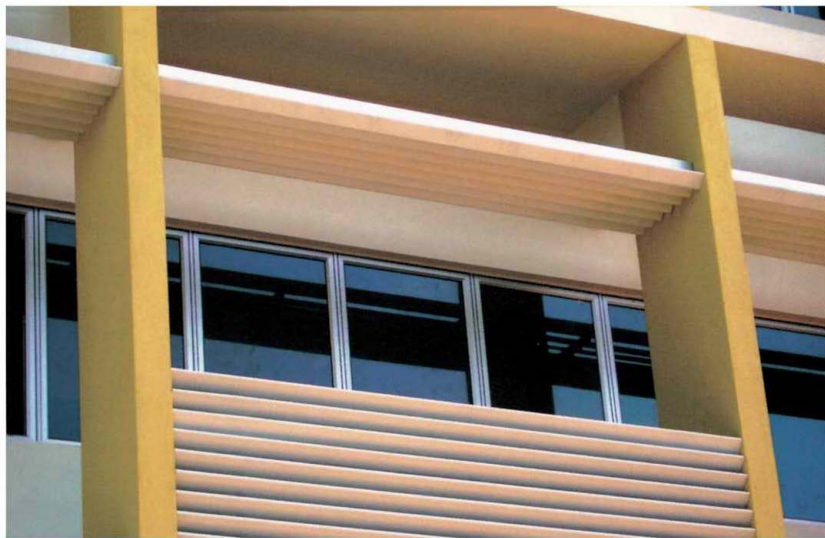


DX-AC85-V SUN LOUVERS IN REAR CIEW



DX-AC85-H SUN LOUVERS IN REAR VIEW

AEROSCREEN DX-AC85-25V/90V



STYLISH AND ELEGANT SUN LOUVERS DESIGN(wood grain color)

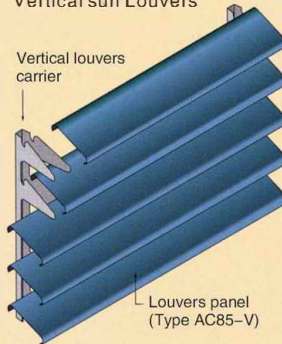
DX-AC85-25V

Typical Installation Plan For DX-AC85-25V Vertical sun Louvers

Carrier For DX-AC85-25V

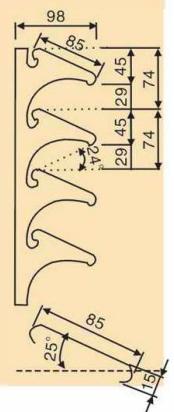
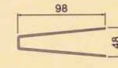
Typical Detail TYPE DX-AC85-25V Vertical Carrier

Vertical louvers carrier



Louvers panel (Type AC85-V)

Isometric View DX-AC85-25V Vertical Sun Louvers



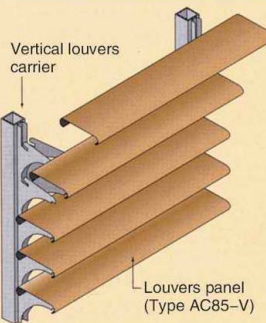
DX-AC85-90V

Typical Installation Plan For DX-AC85-90V Vertical sun Louvers

Carrier For DX-AC85-90V

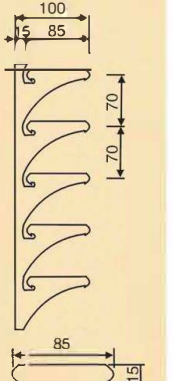
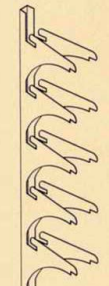
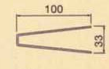
Typical Detail TYPE DX-AC85-90V Vertical Carrier

Vertical louvers carrier



Louvers panel (Type AC85-V)

Isometric View DX-AC85-90V Vertical Sun Louvers



SOLID & STABILITY DESIGN



MULTIPURPOSE PRODUCTS



UNIQUE PANELS DESIGN

DX-AC85-45V

Typical Installation Plan For DX-AC85-45V Vertical sun Louvers

Carrier For DX-AC85-45V

Typical Detail TYPE DX-AC85-45V Vertical Carrier

Vertical louvers carrier

Louvers panel (Type AC85-V)

Isometric View: DX-AC85-45V Vertical Sun Louvers

DX-AC85-66V

Typical Installation Plan For DX-AC85-66V Vertical sun Louvers

Carrier For DX-AC85-66V

Typical Detail TYPE DX-AC85-66V Vertical Carrier

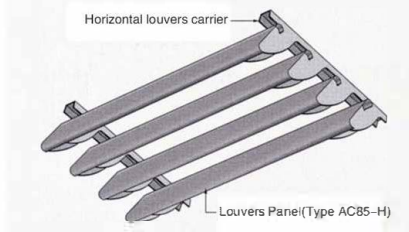
Vertical louvers carrier

Louvers panel (Type AC85-V)

Isometric View: DX-AC85-66V Vertical Sun Louvers

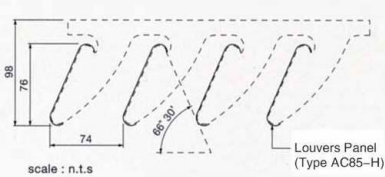
AEROSCREEN DX-AC85-H

Typical Installation Plan For DX-AC85-H Vertical sun Louvers

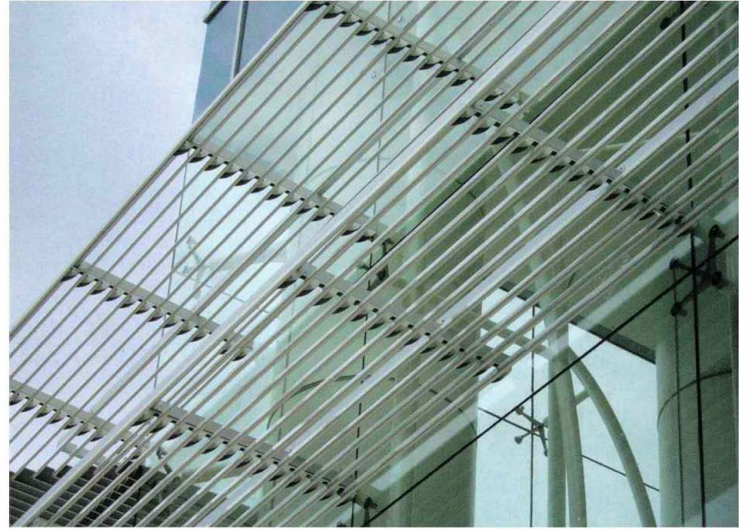


Isometric View DX-AC85-H Vertical Horizontal Sun Louvers

Cross View of panel on Carrier



Carrier For DX-AC85-H Horizontal sun Louvers



AN INNOVATIVE DECORATIVE EFFECT WITH DX-AC85-H HORIZONTAL



BOX LOUVRES DX-BL

Description :

DEXONE BL series Box Sun Louvers are clip in system, directly clip the panel into the groove of carrier, no need any other accessory carrier. Angle and screw are all hidden into the "BOX" carrier, both panel and carrier are aluminum extrusion, in "BOX" shape. The decorative effect is the same from inside and outside view, so it can be used as both sun louvers and guardrail. It's elegant appearance, simple & fixed structure.

Size and Options:

BL series Box Sun Louvers panel size: 20 × 80mm, 20 × 100mm, 25 × 100mm, 25 × 120mm, 30 × 120mm, 30 × 150mm, and other sizes, maximum length 6000mm, other size is available according to customer's design. The surface of the panel can be anodized, PVDF spraying or powder coating, various RAL and woodgrain colors are available for choice.



Installation:

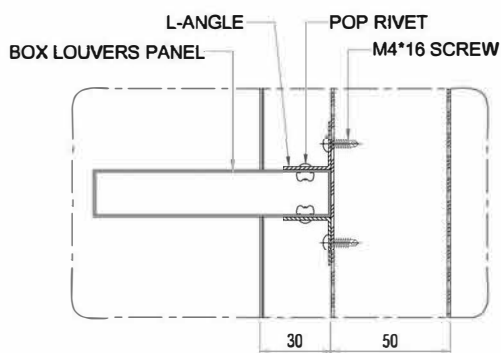
BL Series sun louvers are clip in system:

A) firstly according to the spacing of the panel, make groove in the carrier.

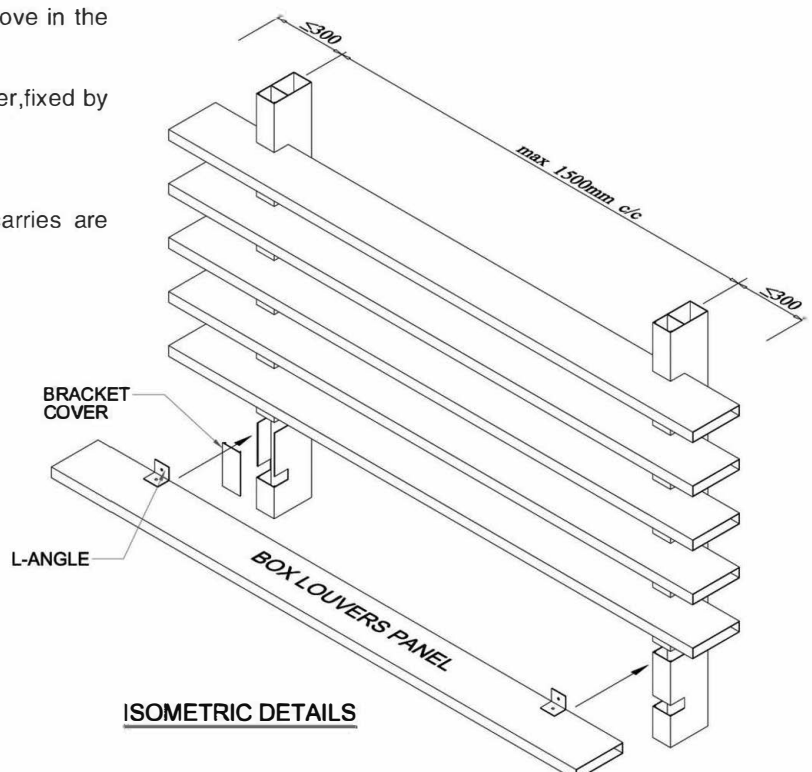
B) then directly clip the panel into the groove of the carrier, fixed by L-angle.

C) then install the endcap.

The maximum spacing of the carrier is 1500mm. The carriers are fixed to the wall or other structure by supporting angle.

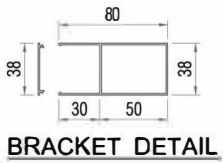


TYPICAL DETAILS

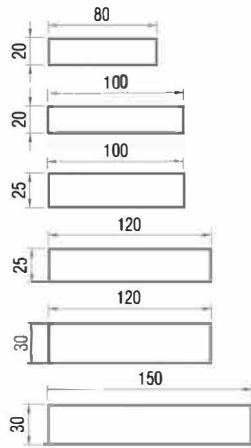


ISOMETRIC DETAILS

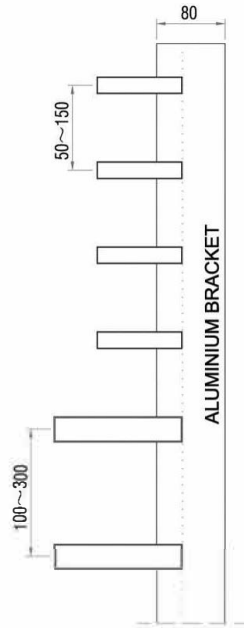
BOX LOUVRES DX-BL



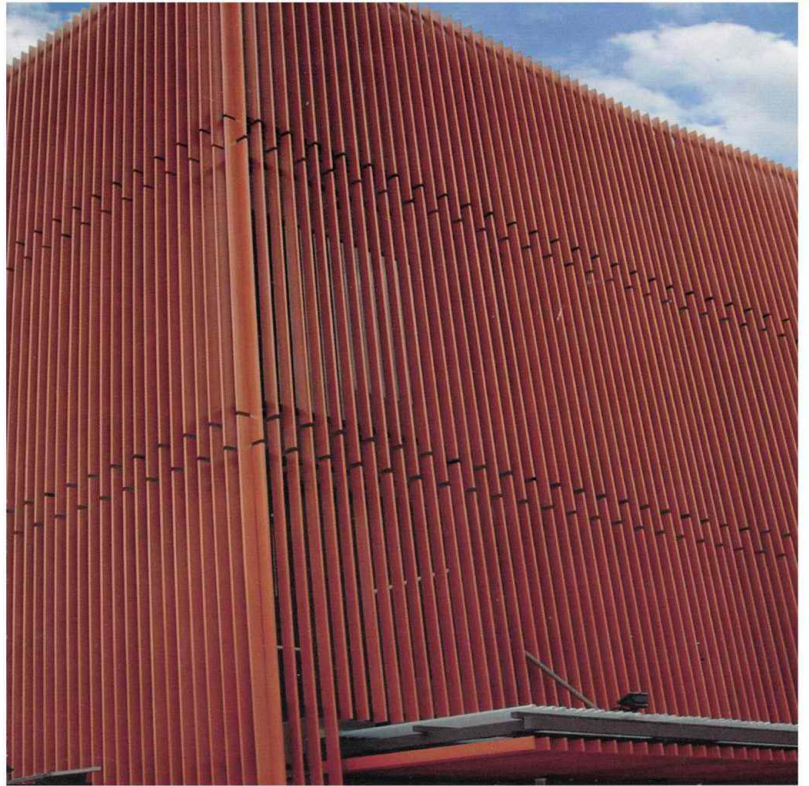
BRACKET DETAIL



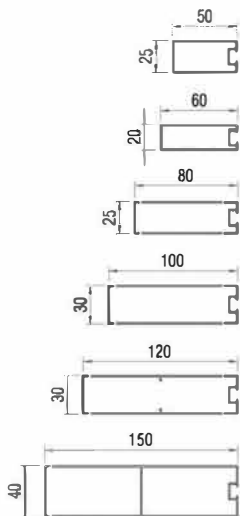
BOX DETAILS



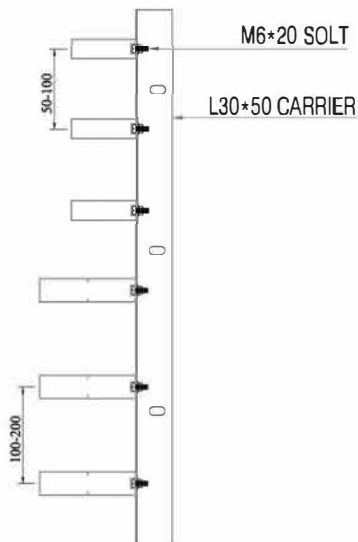
SIDE VIEW



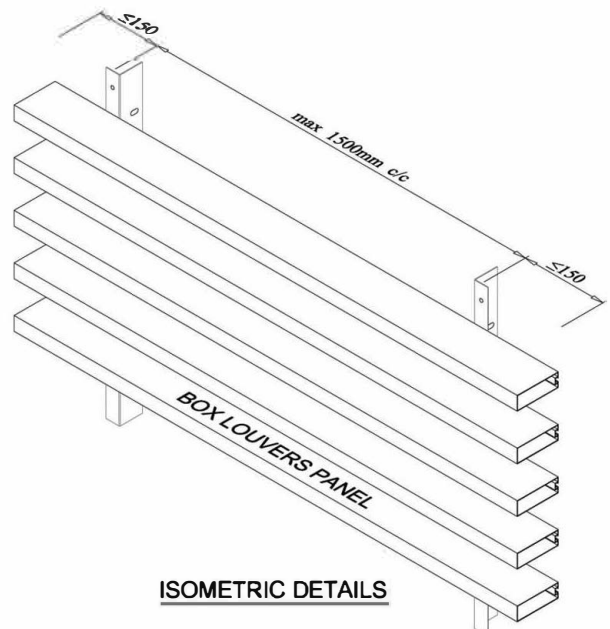
DESCRIPTION		MATERIAL	THICKNESS	RECOMMENDED MAX. LENGTH		MAXIMUM DISTANCE BETWEEN CARRIERS	COLORS
				m	ft		
TYPE			mm			mm	
CARRIER		Aluminum	1.2	5.8	19.03	Inside: 900~1200 Outside: 1000~1500	Various RAL and woodgrain colors available
BOX LOUVERS PANEL	BL20*80	Aluminum	0.75	5.8	19.03		Various RAL and woodgrain colors available
	BL20*100		0.75				
	BL25*100		0.9				
	BL25*120		1.0				
	BL30*120		1.1				
	BL30*150		1.2				



BOX DETAILS



SIDE VIEW



ISOMETRIC DETAILS

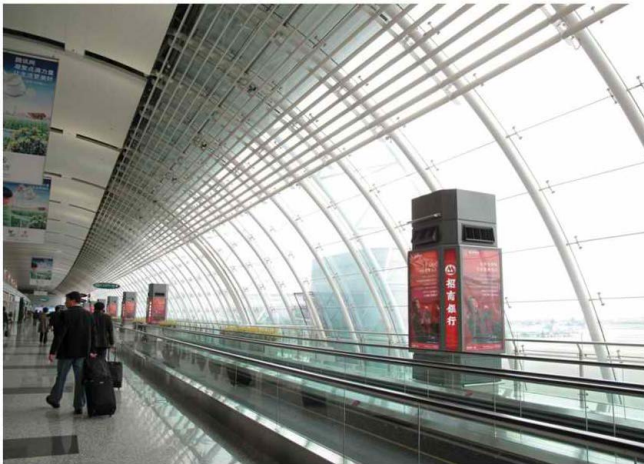
PROJECT REFERENCE



■ GUANGZHOU NANSHA MTR STATION



■ WUHAN CHINA MOBILE RESEARCH



■ GUANGZHOU BAIYUN AIRPORT



■ SHENZHEN BEACH HOSPITAL

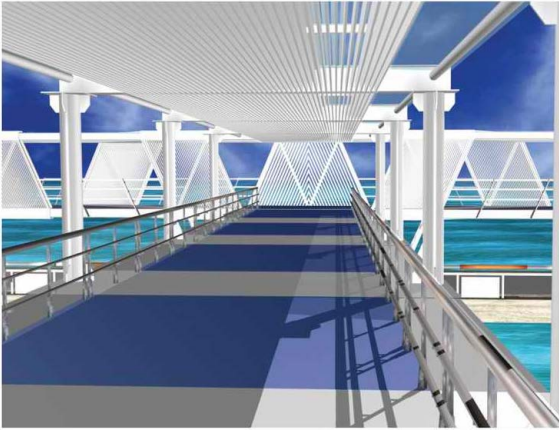


■ WUHAN STADIUM



■ GUANGZHOU INTERNATIONAL FINANCE CENTR

PROJECT REFERENCE



■ NANHAI SANYA INSPECTION WHARF



■ TIANJIN RAILWAY STATION



■ JAPAN NAGOYA UNIVERSITY



■ HONGKONG PACIFICA HOUSE



■ KUALA LUMPUR HAIR PERFECT



■ HONGKONG DONGCHUNG PARK



■ KUALA LUMPUR ADMINISTRATION CENTER



■ MALAYSIA MINISTRY OF FINANCE

TECHNICAL DATA

General Chemical Composition of Aluminum Alloy

ALLOY	6063(%)	6061(%)	6082(%)
Silicon Si	0.20~0.60	0.40~0.80	0.7~1.2
Iron Fe	0.35	0.70	0.5
Copper Cu	0.10	0.15~0.40	0.1
Manganese Mn	0.10	0.15	0.4~0.8
Magnesium Mg	0.45~0.90	0.80~1.2	0.6~0.8
Chromium Cr	0.10	0.04~0.35	0.25
Zinc Zn	0.10	0.25	0.2
Titanium Ti	0.10	0.15	0.1
Others(each)	0.05	0.05	0.05
Others(total)	0.15	0.15	0.15
Aluminium Al	Remainder	Remainder	Remainder

Mechanical Properties of Aluminum Sections Under Room Temperature

ALLOY	State	Tensile strength test			Hardness test		
		Tensile strength Rm Mpa	Non-proportional Stretching Stress	Stretching rate	Pattern thickness		
			R p0.2 Mpa	(A50mm%)			
		Not less than(\geq)					
6063	T4	130	75	14	-		
	T5	160	110	8	0.8	58	8
	T6	205	180	8	-		
6061	T4	180	110	16	-		
	T6	265	245	8	-		
6082 (6351)	T4	205	110	12	-		
	T6	290	250	6	-		

TECHNICAL DATA

Aluminum Mechanical Properties

Alloy Temper	Thickness	Proof Stress Mpa	Tensile Strength Mpa	Elongation%
3003 H24	0.6mm	170	180	3.7
1100 H18	0.6mm	165	100	2.8

Aluminum Chemical Composition

In percentage per weight %

Alloy	Al	Si	Fe	Cu	Mn	Mg	Cr	Zn	Ti
3003	96.95	0.6	0.7	0.10	1.00	0.533	0.007	0.10	0.01
1100	99.17	0.11	0.484	0.08	0.05	—	—	0.10	—

Polyester Powder Coating Performance Properties

Item	Standard	Coating Requirement	Performance
Gloss	ISO2813	(L-G):+5(M-G):+7(H-G):+10	(L-G):+5(M-G):+7(H-G):+10
Thickness of coating	ISO2360	Average of five points is not less than 60um	Average of five points is not less than 60um
Adhesion	ISO2409	Grate to 0	Grate to 0
Erichsen cupping Test	ISO1520	5mm	6mm,no crack
Impact Test	ASTMD2794	2.5NM	2.5NM,no crack
Hardness Test	ISO2815	80 at least	No less than H
Resistance to Cracking on bending	ISO1519	5mm	Φ6mm,no,crack
Mortar Resistance	ASTMC-207	The mortar must be easy to remove Without leaving any residues	No visible change and no removal
Acid resistance	AAMA 605.2	Eroding within 0.5mm off lineation	No froth,goffer of removal.etc
Salt Spray Resistance	ISO9227	1000h	1000h,eroding within 2mm off Lineation
Resistance to boiling water	AAMA 605.2	1 hour	1 hour,no air bubble,goffer or removal vice etc
Accelerated Weathering test	DIN53231 Suntest	1000h,the loss of gloss must not be more than 50%	Good
Solvent Resistance	DIN50017	1000h	Good
Gloss	AAMA605.2		No air bubble,goffer or removal vice etc
Color Test	ISO 2813		$\Delta E^*_{ab} \leq 1.5$

TECHNICAL DATA & PERFORATION PATTERN

PVDF COATING PERFORMANCE PROPERTIES

Description	Coating Requirements	Performance
Color Uniformity	Visual Control	Instrument and visually controlled
Specular gloss at 60 ASTM D523	Medium and low gloss ranges	Controlled to custom spec ± 5 units
Dry film hardness ASTM D 3363	F minimum	H-2H
Film adhesion(dry,wet and boiling water)crosshatch 1/16 inch squares	No removal between Scribed lines	No removal
Impact resistance(direct) 0.10 inch distortion	No removal of film	No removal
Abrasion resistance ASTM D968	20 liters per mil	Exceeds spec
Chemical resistance (10% muriatic acid)	15 minutes No visual changes	Meets or exceeds spec
Chemical resistance (Mortar,alkali)	24 hours No visual changes	Meets or exceeds spec
Resistance to acid pollutants(70% nitric acid)	30 minutes,maximum 5 Δ E NBS Units color change	Meets or exceeds spec
Detergent resistance	72 hours,no effect	Meets or exceeds spec
Humidity resistance ASTM D 2247	4000 hours,few #8 blisters(maximum)	Meets or exceeds spec
Salt spray resistance ASTM B 117	4000 hours,minimum 7 rating on scribe and minium blister rating of 8(ASTM D 1654)	Meets or exceeds spec
Weathering,color Retention,ASTM D 22444	10 years,45° South Florida Maximum 5 Δ E NBS units color change	Meets or exceeds spec
Weathering, chalk Resistance,ASTM D 4214	10 years,45° South Florida,8 rating for colors,6 rating for whites	Meets or exceeds spec
Weathering,erosion resistance	10 years,45° South Florida Maximum 20% loss	Meets or exceeds spec

PERFORATION PATTERN

ITEM /NO.	DETAIL DRAWING (mm)	ITEM /NO.	DETAIL DRAWING (mm)	ITEM /NO.	DETAIL DRAWING (mm)
PATTERN 1 φ 2.5 STRAIGHT HOLE OPENING: 19.5%		PATTERN 2 φ 3.0 DIAGONAL HOLE OPENING: 14.5%		PATTERN 3 φ 3.0 STRAIGHT HOLE OPENING: 11%	
PATTERN 4 φ 4.0 STRAIGHT HOLE OPENING: 19.5%		PATTERN 5 φ 5.0 DIAGONAL HOLE OPENING: 35%		PATTERN 6 φ 5.0 STRAIGHT HOLE OPENING: 19.5%	
PATTERN 7 φ 6.0 STRAIGHT HOLE OPENING: 12.5%		PATTERN 8 φ 6.0 STRAIGHT HOLE OPENING: 27%		PATTERN 9 QUINCUNCIAL HOLE OPENING: 44%	
PATTERN 10 5x5 STRAIGHT SQUARE HOLE OPENING: 25%		PATTERN 11 8x8 STRAIGHT SQUARE HOLE OPENING: 12%		PATTERN 12 10x10 STRAIGHT SQUARE HOLE OPENING: 25%	
PATTERN 13 4.5x21 SLOT HOLE OPENING: 48%		PATTERN 14 5x40 SLOT HOLE OPENING: 43%		PATTERN 15 2x14 SLOT HOLE OPENING: 26.2%	

RAL & WOODGRAIN COLOR CHART

						
RAL 1000	RAL 1001	RAL 1005	RAL 1011	RAL 1017	RAL 1026	RAL 1035
						
RAL 2000	RAL 2002	RAL 2003	RAL 2007	RAL 2009	RAL 2012	RAL 2013
						
RAL 3000	RAL 3004	RAL 3007	RAL 3013	RAL 3024	RAL 3027	RAL 3033
						
RAL 4001	RAL 4003	RAL 4004	RAL 4006	RAL 4007	RAL 4009	RAL 4012
						
RAL 5000	RAL 5004	RAL 5007	RAL 5011	RAL 5015	RAL 5018	RAL 5024
						
RAL 6000	RAL 6005	RAL 6006	RAL 6010	RAL 6016	RAL 6017	RAL 6027
						
RAL 7000	RAL 7003	RAL 7005	RAL 7009	RAL 7038	RAL 7043	RAL 7038
						
RAL 8000	RAL 8004	RAL 8008	RAL 8012	RAL 8016	RAL 8023	RAL 8028
						
RAL 9002	RAL 9004	RAL 9005	RAL 9010	RAL 9018	RAL 9022	RAL 9023

				
811A022	8189-1A	8150A	8145A	8098B-2A
				
8144-1A	8143A	8141A	8134A	8079A
				
8123A	8121-2A	8116A01	8002A	8006A
				
8114-6A	8112-4A	8103-5A	8099-1A	8083A
				
8094-9a	8094-1A	8015-6A	8037A	8055A